



# CONVENTIONAL LUMINAIRES PRICE CUM PRODUCT RECKONER

w.e.f. November 2016



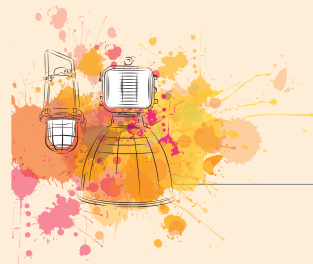
## CONTENT

---



### COMMERCIAL LIGHTING **01-13**

---



### INDUSTRIAL LIGHTING **14-29**

---

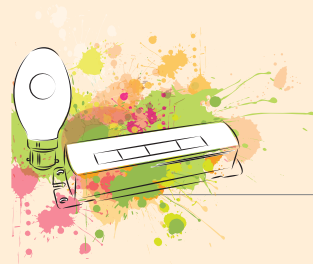
industrial lighting	15
hazardous area lighting	23
cleanroom lighting	27



### CITYSCAPE LIGHTING **30-51**

---

street lighting	31
area lighting	36
induction lighting	42
landscape lighting	45



### ACCESSORIES **52-59**

---

ballast	52
light sources	54
HID lamps	55
spares price list	57

# commercial lighting



Product Code	Luminaire Ref	Lamp Type	Standard Packaging	Unit Price ₹
--------------	---------------	-----------	--------------------	--------------

#### Recess mounted T5 decorative luminaire with acrylic diffuser

538563	BPOARM 414	4x14W T5	2	12000
--------	------------	----------	---	-------

Powder coated CRCA sheet steel housing with extruded aluminium frame, side bended acrylic and mirror in center.



#### Recess mounted indirect decorative luminaire with acrylic diffuser

538880	BTTI 414 LHD	4x14W T5	2	5600
538676	BTTI 314 LHD	3x14W T5	2	5300

Powder coated CRCA sheet steel housing with high efficiency translucent acrylic in center.



#### Recess mounted direct indirect decorative luminaire

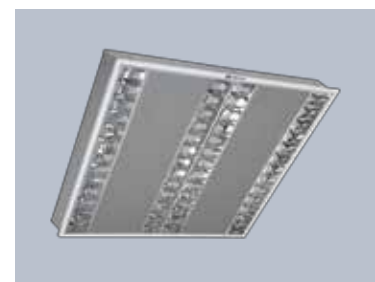
539216	BNXT 314 AC	3x14W T5	2	4600
539051	BNXT 414 AC	4x14W T5	2	4600



#### Recess mounted darklite T5 luminaire

538683	BTMRA 414 V2	4x14W T5	2	5300
538684	BTMRA 314 V2	3x14W T5	2	5100

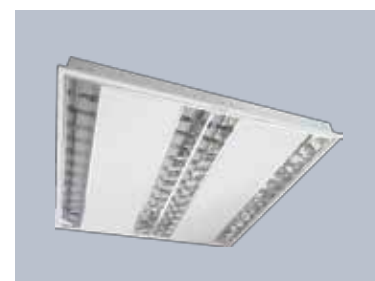
Powder coated CRCA sheet steel housing with low depth darklite mirror louver.



#### Recess mounted darklite T5 luminaire

539416	BTMRA 414 V2 WH	4x14W T5	2	5300
--------	-----------------	----------	---	------

White powder Coated CRCA sheet steel housing with low depth darklite mirror louver.



Product Code	Luminaire Ref	Lamp Type	Standard Packaging	Unit Price ₹
--------------	---------------	-----------	--------------------	--------------

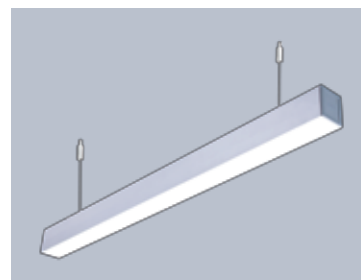
**.nxt Connect**

**Suspended mounted luminaire**

539101	BPTX 128 N	1x28W T5	1	9900
539130	BPTX 154 N	1x54W T5	1	10600
539141	BPTX 114 N	1x14W T5	1	6700

High quality extruded aluminium housing designed for suspended mounting with white extruded acrylic.

Note : Standalone Mounting

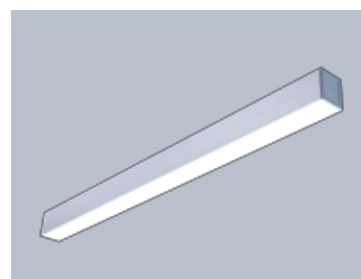


**Recessed mounted luminaire**

111931	BRTX 114 N	1x24W T5	1	5350
539234	BRTX 128 N	1x28W T5	1	7590
539236	BRTX 154 N	1x54W T5	1	8590

High quality extruded aluminium housing designed for surface mounting with white extruded acrylic.

Note : Standalone Mounting

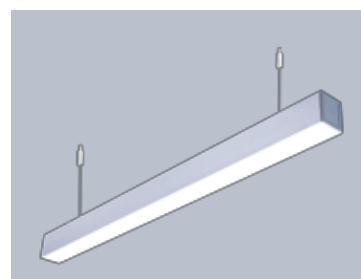


**'CONNECT' Suspension/surface mounting luminaire**

111922	BPTX 124 CS/E	1x24W T5	1	6900
111915	BPTX 128 CS/E	1x28W T5	1	9900
111916	BPTX 128 CM	1x28W T5	1	9900
111917	BPTX 2.3x228 CM	2x28W T5	1	18250

High quality extruded aluminium housing designed for surface/suspended mounting with white extruded acrylic.

Note : Connectable Mounting

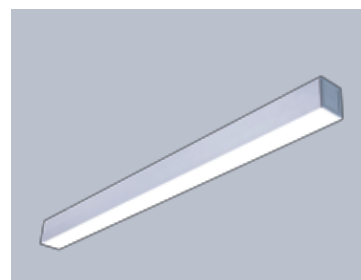


**'CONNECT' Recessed mounting luminaire**

111929	BRTX 128 CM	1x28W T5	1	7590
111925	BRTX 2.3x228 CM	2x28W T5	1	11000
111927	BRTX 128 CS/E	1x28W T5	1	7590

High quality extruded aluminium housing designed for surface/suspended mounting with white extruded acrylic.

Note : Connectable Mounting



**Hospital bed head light**

539288	BJHL 118/136 CFL/GLS	18W, 36W CFL & GLS	1	5625
--------	----------------------	-----------------------	---	------

Multipurpose bed head light made of powder coated CRCA sheet and acrylic.



Product Code	Luminaire Ref	Lamp Type	Standard Packaging	Unit Price ₹
--------------	---------------	-----------	--------------------	--------------

#### 'COMFORTLITE Series' direct/indirect luminaires

538920	BCLA 236 CFL WEB2	2x36W 'L' type CFL	2	3260
--------	-------------------	--------------------	---	------

Powder coated CRCA sheet steel housing with concave cover of honeycomb type perforations.



#### 'COMFORTLITE Series' Direct/indirect luminaires

▶ 538924	BCLA 101 236 CFL WEB2	2x36W 'L' type CFL	2	3500
----------	-----------------------	--------------------	---	------

Powder coated CRCA sheet steel housing concave cover fitted with P5 louver.



#### Recess mounting CFL low glare luminaires with paralite P5 louvres

▶ 530736	BMLA 01 218 CFL D W2EB	2x18W 'D' type CFL	4	2260
▶ 530077	BMLA 01 236 CFL WEB2	2x36W 'L' type CFL	2	4120
▶ 530737	BMLA 01 336 CFL W2EB	3x36W 'L' type CFL	2	4750
▶ 538926	BMLA 101 236 CFL WEB2	2x36W 'L' type CFL	2	3625

Powder coated CRCA sheet steel housing with square paralite P5 louver block in a perforated metallic frame.



#### 'PARA - COMFORT' Recess mounted direct/indirect luminaire with coloured wings

538478	BCNPA 236 CFL P5 WEB2	2x36W 'L' type CFL	2	5150
539150	BCNPA 236 CFL SR WEB2	2x36W 'L' type CFL	2	4250

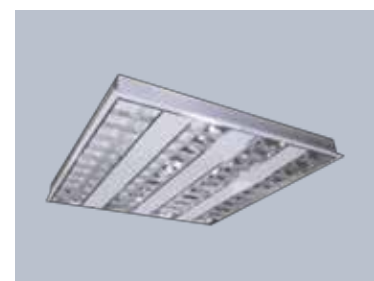
Powder coated CRCA housing with mirror optics louver and decorative sans for Indirect/Direct lighting. Decorative wings available in Clear, Green, Blue and Orange colour.



#### Recess mounted T5 mirror optics luminaires

▶ 161912	BTMRA 414 MS	4x14W T5	4	5430
160904	BTMRA 314 MS	3x14W T5	4	5310
538999	BTMRA 414 MS G	4x14W T5	4	4100

CRCA sheet steel corrosion resistant finish with semi specular aluminium reflector.

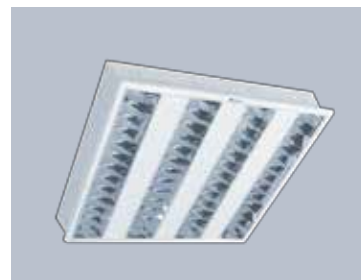


Product Code	Luminaire Ref	Lamp Type	Standard Packaging	Unit Price ₹
--------------	---------------	-----------	--------------------	--------------

**Recess mounting T5 lamp cat II dark lighter mirror optics luminaires**

160429	BTMRA 414 CAT II	4x14W T5	4	6050
160427	BTMRA 228 CAT II	2x28W T5	4	5160

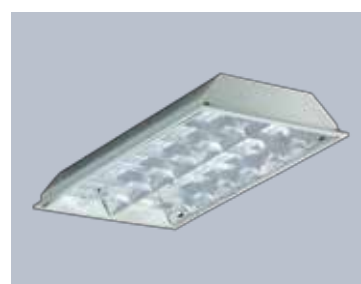
Epoxy powder coated CRCA sheet steel housing having low glare cat II optics using 3D louver.



**Recess mounting CFL luminaires**

530150	BMMR 236 CFL WEB2	2x36W 'L' type CFL	4	2850
--------	-------------------	--------------------	---	------

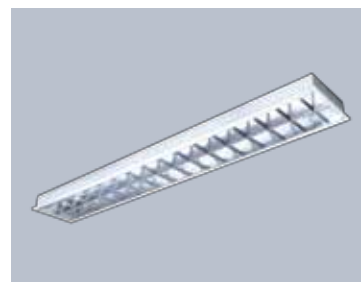
White powder coated CRCA sheet steel housing with pre-anodised aluminium parabolic reflector and serrated matt anodised aluminium extruded baffles.



**Recess mounted T5 mirror optics luminaires**

▶ 530713	BTLM 228	2x28W T5 Lamp	4	3475
----------	----------	---------------	---	------

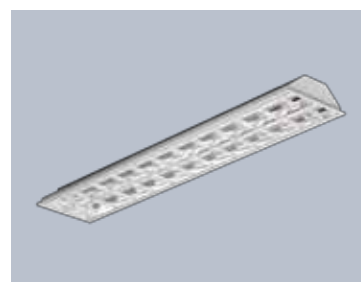
White powder coated CRCA sheet steel housing with matt finish mirror reflector. BTLM 224 and BTLM 254 available on request.



**Recess mounting FTL mirror optics luminaires**

530007	BMMR 136/140 WEB1	1x36/40W FTL	4	2250
530008	BMMR 236/240 WEB2	2x36/40W FTL	4	3200

White powder coated CRCA sheet steel housing with aluminium mirror reflector.



**Recess mounting CFL Luminaires**

531083	BMR 211 CFL W2EB	2x11W 'S' type CFL	8	1350
531151	BMR 218 CFL WEBS	2x18W 'L' type CFL	8	1375

White powder coated CRCA sheet steel housing with matt finish mirror reflector. BTLM 224 and BTLM 254 available on request.





Product Code	Luminaire Ref	Lamp Type	Standard Packaging	Unit Price ₹
--------------	---------------	-----------	--------------------	--------------

## WORKSPACE LIGHTING - SURFACE

### Surface mounting CFL low glare luminaire with paralite P5 louvres

538735	BSMLA 01 218 WEBS	2x18W 'L' type CFL	4	2725
▶ 530718	BSMLA 01 236 CFL WEB2	2x36W 'L' type CFL	2	4200
531017	BSMLA 01 336 CFL W2EB	3x36W 'L' type CFL	2	4750

White powder coated CRCA sheet steel housing with square paralite P5 louver block, crescent light opening in a perforated metallic frame.



### Surface mounting extruded aluminium housing CFL mirror optics luminaires

530188	BASM 236 CFL WEB2	2x36W 'L' type CFL	4	4425
531148	BASM 218 CFL WEBS	2x18W 'L' type CFL	4	3825

Superior finish extruded aluminium body with anodised aluminium reflector and aluminium cross louver assembly.



### Surface type

▶ 531141	BSM 211 CFL W2EB	2x11W 'S' type CFL	8	1400
▶ 531142	BSM 218 CFL WEBS	2x18W 'L' type CFL	8	1400

White powder coated CRCA sheet steel housing with aluminium anodised reflector and powder coated baffles.



### Surface mounting CFL luminaires

▶ 530330	BJSM 211 W2EB	2x11W 'S' type CFL	8	1775
530755	BJSM 218 D W2EB	2x18W 'L' type CFL	8	1775

White powder coated CRCA sheet steel housing with aluminium mirror reflector.



## WORKSPACE LIGHTING - SURFACE/PENDANT

### Surface/pendent mounting extruded aluminium housing T5/T8 lamp mirror optics luminaires

160709	BTSMU 228 MSS	2x28W T5 Lamp	4	6000
--------	---------------	---------------	---	------

Surface/ Pendent mounting extruded aluminium housing with decorative end caps and mirror optic reflector with electronic ballast.

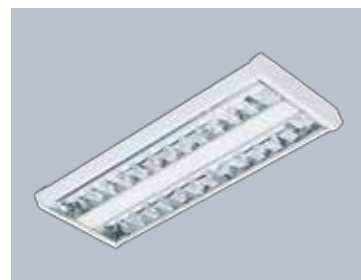


Product Code	Luminaire Ref	Lamp Type	Standard Packaging	Unit Price ₹
--------------	---------------	-----------	--------------------	--------------

**Surface/pendent mounting extruded aluminium housing T5 lamp mirror optics luminaires**

160763	BTSM 128	1x28W T5 Lamp	4	5050
160496	BTSM 228	2x28W T5 Lamp	4	5400

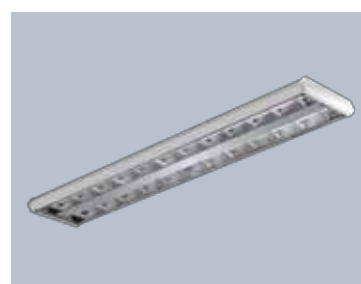
Surface/Pendent mounting extruded aluminium housing with decorative end caps and mirror optic reflector with electronic ballast.



**Surface/pendent mounted T5 luminaire**

531018	BTSM 02 214	2x14W T5	4	3600
▶ 160514	BTSM 02 228	2x28W T5	4	3700

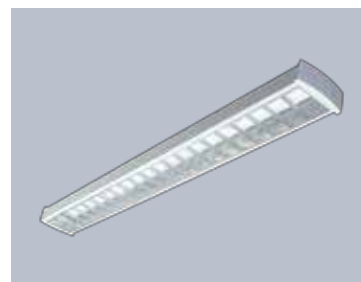
White powder coated CRCA housing with plastic end caps, mirror optic reflector and electronic ballast.



**'SIMPLE' Surface/pendent mounted T5 luminaire**

▶ 539231	BTSM 2/228	2x28W T5	4	2950
▶ 539016	BTSM 2/128	2x28W T5	4	2900

White powder coated CRCA housing with decorative end caps, mirror optic reflector and electronic ballast.



**'PETAL' Surface/pendent mounted T5 luminaire**

539273	Petal 228	2x28W T5	4	3150
--------	-----------	----------	---	------

Unique petal shaped white powder coated CRCA housing with mirror optic reflector and electronic ballast.



**Surface/pendent mounted T5 luminaire**

▶ 530677	BJSM 01 128	1x28W T5	4	2550
----------	-------------	----------	---	------

White powder coated CRCA housing with mirror optic reflector with electronic ballast.

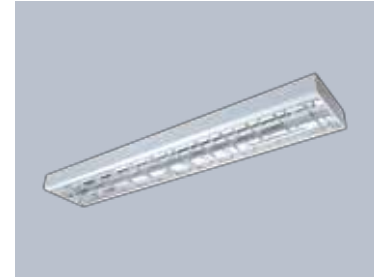


Product Code	Luminaire Ref	Lamp Type	Standard Packaging	Unit Price ₹
--------------	---------------	-----------	--------------------	--------------

#### Surface mounting luminaires

530764	BSM 136/140 WEB1	1x36/40W FTL	4	2350
▶ 530005	BSM 236/240 WEB2	2x36/40W FTL	4	3300
538458	BSM 2/136 WEB2	2x36/40W FTL	4	2900

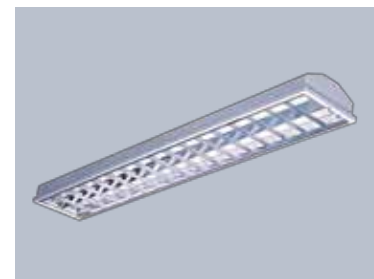
White powder coated CRCA sheet steel housing with aluminium mirror reflector.



#### Surface/recess mounting FTL luminaires

▶ 538905	BJCM 236 WEB2	2x36W FTL	2	3100
----------	---------------	-----------	---	------

White powder coated CRCA sheet steel housing with aluminium mirror reflector.



#### Surface mounting CFL luminaires

▶ 530823	BJC 111 WEB1	1x11W 'S' type CFL	8	770
----------	--------------	--------------------	---	-----

White powder coated CRCA sheet steel housing with opal acrylic diffuser and decorative end plates. Plastic housing wired with ballast. Available with electronic gear only.



#### Surface mounting CFL luminaires

169488	BJLF1 15W RF	15W Retrofit CFL	12	1250
169489	BJLF2 15W RF	15W Retrofit CFL	6	2050
169490	BJLF3 11W RF	11W Retrofit CFL	16	1150

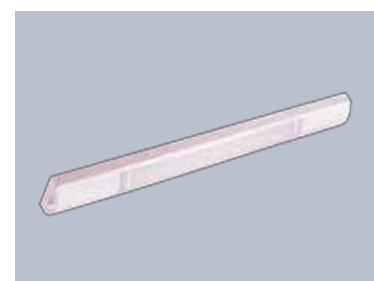
White powder coated CRCA sheet steel housing.



#### Surface mounting CFL luminaires

160599	BSP 111	1x11W 'S' type CFL	8	1275
▶ 160601	BSP 118 CFL	1x18W 'L' type CFL	4	1300
160600	BSP 211	2x11W 'S' type CFL	8	1900
160602	BSP 218 CFL	2x18W 'L' type CFL	4	1900
160603	BSP 136 CFL	1x36W 'L' type CFL	4	1650
160604	BSP 236 CFL	2x36W 'L' type CFL	4	2700

White powder coated CRCA sheet steel housing with opal acrylic diffuser and decorative end plates. Available with electronic gear only.

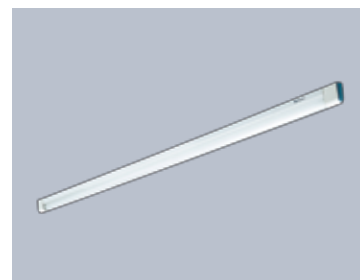


Product Code	Luminaire Ref	Lamp Type	Standard Packaging	Unit Price ₹
--------------	---------------	-----------	--------------------	--------------

### WORKSPACE LIGHTING - RAILS

Surface/pendent mounting T5 lamp luminaire PVC body channel with acrylic

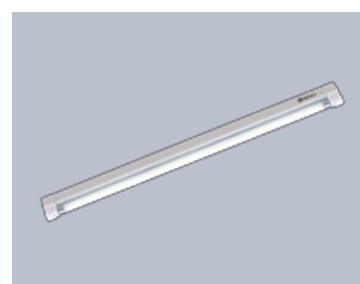
▶ 539054	BTIP 128 ACR N	1x28W T5	10	860
538969	BTIP 114 ACR N	1x14W T5	10	625



Surface/pendent mounting T5 lamp luminaire PVC body channel

▶ 539055	BTIP 128 N	1x28W T5 Lamp	10	700
538968	BTIP 114 N	1x14W T5 Lamp	10	550

Plastic extruded housing with in-built electronic control gear with decorative end caps.

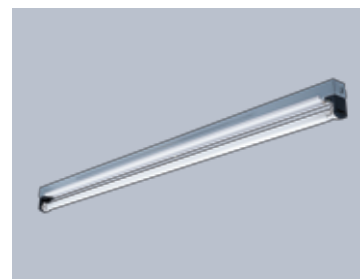


CRCA box type luminaire suitable for surface/pendent mounting

▶ 530850	BJCEB 136/140 WEB	1x36/40W FTL	16	875
▶ 531344	BJCEB 236/240 W2EB	2x36/40W FTL	16	1425
531262	BJCEB 118/120 W2EB	1x18/20W FTL	16	775
▶ 538664	BJCEB136 WEBS	1x36W FTL	20	750

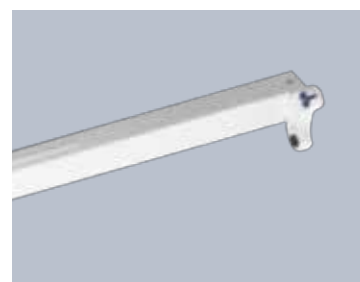
CRCA sheet steel housing with white reflector cover fitted to the body.

Also available with commercial LPF version in 36W.



CRCA box type luminaire suitable for surface/pendent mounting Full White Version

▶ 539261	BTER 114	1x14W T5	20	750
▶ 539242	BTER 128	1x28W T5	20	825
▶ 539399	BTER 228	2x28W T5	20	1400



CRCA precoated electronic box type luminaire with decorative end caps

▶ 530769	BCIR 136 WEB	1x36/40W FTL	6	975
----------	--------------	--------------	---	-----

Precoated CRCA sheet steel housing wired with individual commercial HF ballast.

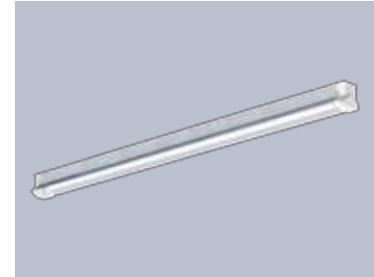


Product Code	Luminaire Ref	Lamp Type	Standard Packaging	Unit Price ₹
--------------	---------------	-----------	--------------------	--------------

### PROTON - precoated channels with reflector fitted with decorative contoured end caps

▶ 162640	BLPR 128	1x28W T5	12	1550
▶ 162641	BLPR 228	2x28W T5	12	1950

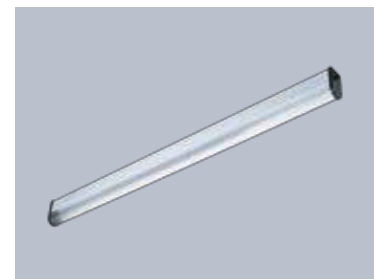
Precoated CRCA sheet steel housing with reflector and decorative end caps T5 channel luminaire. Available in 1x36W, wired with commercial HF ballast.



### Surface mounting FTL luminaires

▶ 531019	BJSRP 136/140 WEB	1x36/40W FTL	6	1375
----------	-------------------	--------------	---	------

White powder coated CRCA sheet steel housing with reeded/polystyrene diffuser, wired with commercial ballast.



### Round surface mounting CFL luminaires

▶ 531239	BCSC 218 CFL W2EB	2x18W 'D' type CFL	4	2500
----------	-------------------	--------------------	---	------

Elegantly designed white epoxy powder coated CRCA housing with opal acrylic cover.



### Surface mounting CFL downlighter (open type)

531130	BJDS 110/113 C WEB	1x10/13W 'D' type CFL	8	1550
▶ 531131	BJDS 118 C WEB	1x18W 'D' type CFL	8	1550
531132	BJDS 210/213 C W2EB	2x10/13W 'D' type CFL	8	1800
▶ 531133	BJDS 218 C W2EB	2x18W 'D' type CFL	8	1800

White powder coated CRCA body with satin bright aluminium reflector.



### Horizontal downlighters

530804	BJDR 113 H WEB	1x13W 'D' type CFL	8	1100
530631	BJDR 118 H WEB	1x18W 'D' type CFL	8	1100
530805	BJDR 213 H W2EB	2x13W 'D' type CFL	8	1350
▶ 530806	BJDR 218 H W2EB	2x18W 'D' type CFL	8	1400

White powder coated CRCA ring, aluminium reflector wired with commercial HF ballast for individual lamps.

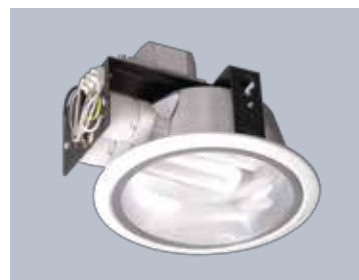


Product Code	Luminaire Ref	Lamp Type	Standard Packaging	Unit Price ₹
--------------	---------------	-----------	--------------------	--------------

**Matt finish horizontal downlighters**

530807	BJDR 118 H MF WEB	1x18W 'D' type CFL	8	1100
530808	BJDR 218 H MF W2EB	2x18W 'D' type CFL	8	1400

- ▶ White powder coated CRCA ring, matt finish aluminium reflector wired with commercial HF ballast for individual lamps.



**Vertical downlighters**

- ▶ 538535 BJDR 118 WEB1 VI 1x18W 'D' type CFL 8 800

White powder coated CRCA ring, bright finish aluminium reflector wired with commercial HF ballast for individual lamps.



**Super low height (<70 mm) matt - satin bright finish downlighters**

538456	BJDR118 SLH WEB	1x18W CFL	8	1275
531066	BJDR 218 SLH W2EB	2x18W 'D' type CFL	8	1550

White powder coated CRCA ring, with matt finish aluminium reflector wired with two nos. of commercial HF ballast



**Super low height (<70mm) matt - satin bright finish downlighters.**

- ▶ 538741 BJDR 118 FR FGLN WEB 1x18W 'D' type CFL 8 1500
- ▶ 538740 BJDR 218 FR FGLN W2EB 2x18W 'D' type CFL 8 1675

White powder coated CRCA ring with spun aluminium reflector, with centre frosted glass in ring frame fixed to the housing.



**“Low depth” Horizontal mounted downlighters with frosted glass**

531261	BJDR 218 SLH FR FGL W2EB	2x18W 'D' type CFL	8	1725
--------	--------------------------	--------------------	---	------

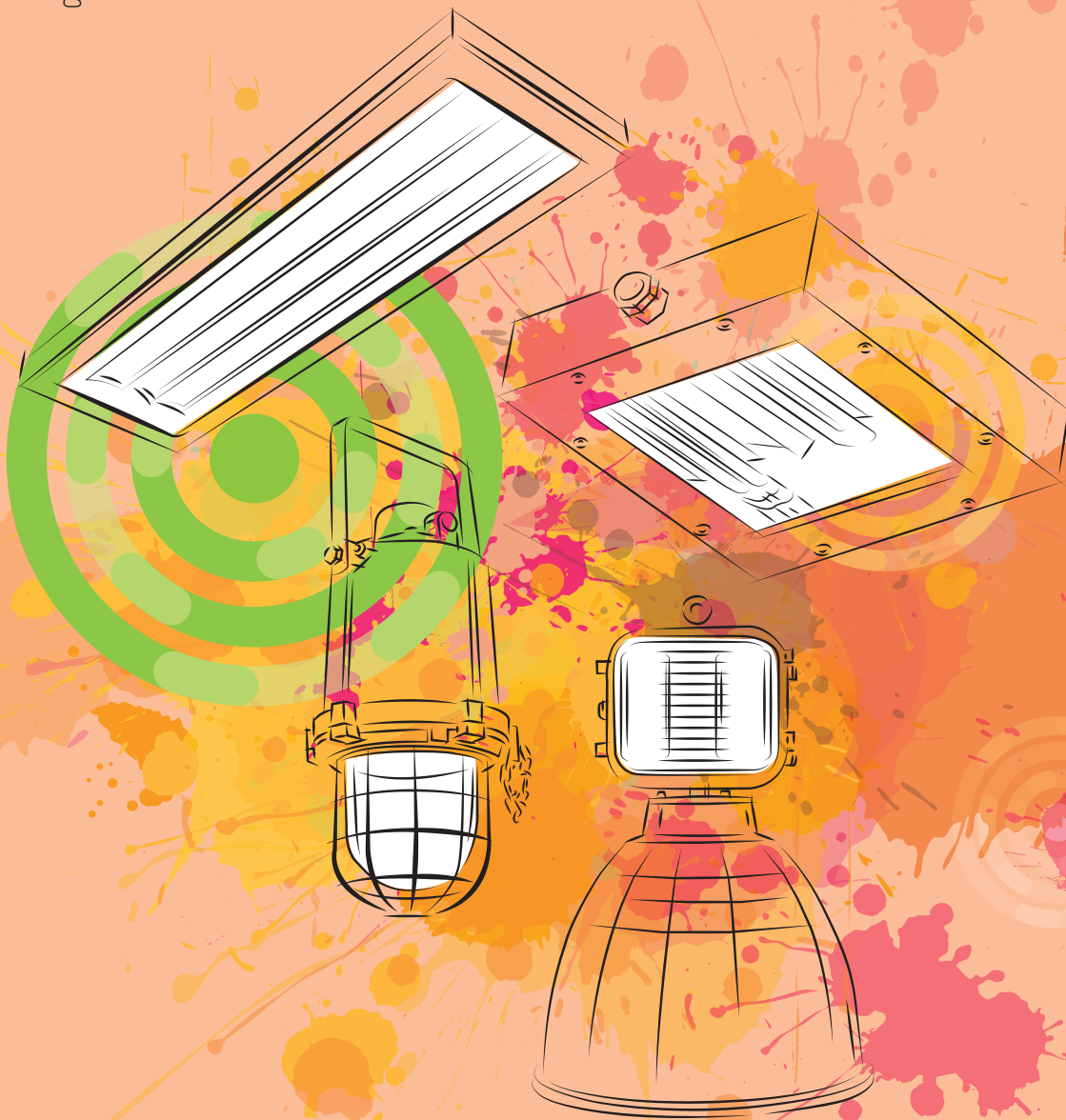
White powder coated CRCA ring, low depth aluminium reflector & centre frosted glass cover.





# industrial lighting

industrial lighting  
hazardous area lighting  
cleanroom lighting







Product Code	Luminaire Type	Lamp Type	Standard Packaging	Unit Price ₹
--------------	----------------	-----------	--------------------	--------------

#### Surface/pendent mounting industrial T5 luminaires

▶ 160483	BTIR 128	1x28W T5	20	1190
▶ 160484	BTIR 228	2x28W T5	10	1570

White powder coated CRCA sheet steel housing with reflector cover T5 Channel luminaire.



#### External Reflectors for surface/pendent T5 luminaires

▶ 160796	Aluminium reflector for BTIR 128/228	-	-	410
▶ 161387	MS powder coated reflector for BTIR 128/228	-	-	340

#### Surface/pendent mounting FTL industrial luminaires

▶ 531003	BJIR 136/140 WEB1	1x36/40W FTL	12	1150
▶ 531004	BJIR 236/240 WEB2	2x36/40W FTL	12	1620

White powder coated CRCA sheet steel housing with reflector cover.



Product Code	Luminaire Type	Lamp Type	Standard Packaging	Unit Price ₹
--------------	----------------	-----------	--------------------	--------------

### Surface/pendent mounting FTL industrial luminaires with reflector

▶ 162292	BJSER 136/140/236/240 Reflector	-	4	530
----------	---------------------------------	---	---	-----

Epoxy white powder coated reflector to be mounted on BJIR channel.

Note: Please indent BJSER reflector and BJIR channel separately for BJIE 136/140/236/240 luminaires



### Vitreous enameled external reflector for industrial FTL luminaire type BJIR 136/236

022104	VE reflector suitable for 136/140/236/240	-	-	1400
--------	---	---	---	------

Vitreous enameled reflector to be mounted on BJIR luminaires.

Note: Please indent IV reflector and BJIR channel separately for BJIV 136/140/236/240 luminaires

### Surface/pendent mounting polycarbonate body, corrosion resistant FTL/T5 industrial luminaires

▶ 530329	BJI 136/140 PC WEB1	1x36/40W FTL	1	3040
▶ 530695	BJI 236/240 PC WEB2	2x36/40W FTL	1	4000
▶ 530733	BTI 128 T5 PC	1x28W T5 Lamp	1	3060
▶ 530734	BTI 228 T5 PC	2x28W T5 Lamp	1	3970
539590	BTI 254 T5 PC	2x54W T5 Lamp	1	4720



### 'TRENDY' industrial T5 highbay (IP54)

539115	BTHBX 428	4x28W T5 Lamp	1	8920
539116	BTHBX 454	4x54W T5 Lamp	1	10170
539375	BTHBXR 454	4x54W T5 Lamp	1	12990

T-5 Highbay with CRCA Housing



### Lowbay integral horizontal ceiling mounted HID luminaires

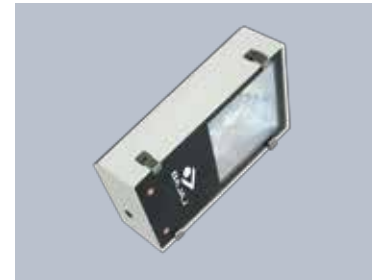
	BJRLB 02 125 MV BC Complete			4020
162408	BJRLB 02 125 MV BC WOB	HPMV 125W	2	2120
161849	BJOR 125 MV		16	1900
	BJRLB 02 70 MH Complete			3560
162410	BJRLB 70 MH WOB	MH SE 70W	2	2360
169408	BJOS 70 SV/MH		16	1200



Product Code	Luminaire Type	Lamp Type	Standard Packaging	Unit Price ₹
--------------	----------------	-----------	--------------------	--------------

#### Mediumbay integral horizontal ceiling mounted HID luminaires

	BJRMB 150 MH DE Complete			5160
162412	BJRMB 150 MH DE WOB	MH DE 150W	2	3360
162109	BJOS 150 SV/MH		8	1800
	BJRMB 250 SV Complete			6920
162309	BJRMB 250 SV WOB	HPSV 250W	2	4170
169677	BJOS 250 SV/MH		8	2750
	BJRMB 250 MH Complete			6950
162290	BJRMB 250 MH WOB	MH 250W	2	4200
169677	BJOS 250 SV/MH		6	2750



#### Non - integral wellglass luminaires

Product Code	Luminaire Type	Lamp Type	Lamp Hosing	Glass & Guard	Unit Price ₹
165513	BJWV 200 ES	MV 80/125W/ SV 70W	16	8	1320

Note : Use appropriate separate control gear box when used with HID Lamps.



#### Non - integral wellglass luminaires

Product Code	Luminaire Type	Lamp Type	Lamp Hosing	Glass & Guard	Unit Price ₹
25513	BJWV 300	Up to 300W GLS & HPSV 150W	4	8	1920

Die-cast aluminium alloy housing grey hammertone stove enamelled finish, heat resistant wellglass with gasket.

Note: Use separate control gear 150W HPSV lamp.



#### Integral wellglass luminaires

Product Code	Luminaire Type	Lamp Type	Lamp Hosing	CG Hosing	Glass & Guard	Unit Price ₹
161355	BJWWIS 125 MV ES	HPMV 125W	16	4	8	3550
▶ 161350	BJWWIS 70 SV	HPSV 70W E	16	4	8	3660
▶ 161890	BJWWIS 70 MH	MH SE 70W E	16	4	8	3690
▶ 162096	BJWWIS 150 SV	HPSV 150W E	4	4	8	5230
162448	BJWWIS 150 MH (E40)	MH 150W E	4	4	8	5230

Die-cast aluminium alloy housing grey hammertone stove enamelled finish, heat resistant wellglass with gasket, suitable for HID lamps with integral separate control gear.



## Industrial lighting

Product Code	Luminaire Type	Lamp Type	Standard Packaging	Unit Price ₹
--------------	----------------	-----------	--------------------	--------------

### Integral wellglass luminaires

			Lamp Hosing	Glass & Guard	
169670	BJDWIS 80 MV BC	HPMV 80W	4	8	2940
169669	BJDWIS 80 MV ES	HPMV 80W	4	8	3010
▶ 162511	BJDWI 125 MV ES	HPMV 125W	4	8	3080
▶ 169668	BJDWIS 70 SV	HPSV 70W E	4	8	2720
161292	BJDWI 70 MH	MH SE 70W	4	8	3210
169697	BJDWI 150 SV	HPSV 150W E	4	8	4700

Die-cast aluminium housing epoxy grey powder coated built in control gear, heat resistant wellglass with MS zinc plated wire guard and eyebolt.



### Integral wellglass CFL luminaires

531101	BJDWIS 226 CFL WEB2	2x26W 'D' Type CFL	4	8	2830
531103	BJDWIS 218 CFL WEB2	2x18W 'D' Type CFL	4	8	2710

Die-cast aluminium housing epoxy grey powder coated built in electronic ballast, heat resistant wellglass with MS zinc plated wire guard and eyebolt.



### External auxiliary reflectors for well glass luminaires

020107	White powder coated reflector for DWI/VV 300/VWI 150 SV	-	-	420
--------	---	---	---	-----

### Canopy lighting luminaires

168999	BJUCL 400 MMH A	MMH T 400W	1	10170
169000	BJUCL 400 MMH AS	MMH T 400W	1	10170

Single piece, integral, epoxy white powder coated MS/aluminium housing with die-cast aluminium frame fixed to the housing and heat resistant toughened clear glass cover & accessories for 250/400W tubular metal halide lamp.



### Tunnel lighting luminaires

161069	BJTL 150 SV T WOB	HPSV T 150W	1	6030
161070	BJTL 150 MH T E27 WOB	MH T 150W	1	5950
161071	BJTL 250 SV T WOB	HPSV T 250W	1	7330
161072	BJTL 250 MH T WOB	MH T 250W	1	7360
161073	BJTL 400 SV T WOB	HPSV T 400W	1	7550
161074	BJTL 400 MH T WOB	MH T 400W	1	7580

Integral, epoxy grey powder coated CRCA sheet aluminium housing, aluminium reflector with heat resistant toughened clear glass cover and accessories. Please order ballasts of corresponding rating separately with above luminaires.



Product Code	Luminaire Type	Lamp Type	Standard Packaging	Unit Price ₹
--------------	----------------	-----------	--------------------	--------------

#### GLS/retrofit CFL bulkhead luminaires

▶ 024710	BJDB 100 BC	100W GLS BC	20	610
024720	BJDB 100 ES	100W GLS ES	20	670
▶ 162422	BJDB 10 CFL RF	10W Retrofit CFL	20	620

Die-cast aluminium alloy body heat resistant prismatic glass cover, with specially designed gasket.



#### CFL bulkhead luminaires

▶ 531281	BJBE 19 WEB	1x9W 'S' type CFL	8	1250
----------	-------------	-------------------	---	------

Deep drawn anodised aluminium body, epoxy white powder coated, heat resistant prismatic glass cover with specially designed gasket



#### CFL bulkhead luminaires

531326	BJCB 111 WEB	1x11W 'S' type CFL	8	1660
▶ 531327	BJCB 118 WEB	1x18W 'S' type CFL	8	1660

CFL bulkhead with ABS housing and clear polycarbonate cover with electronic ballast.



#### HIGHBAY/MIDBAY LUMINAIRES Non - integral highbay/mediumbay luminaire

169104	BJHB/MB NI 150/400 Hosing CA	-	8	1420
--------	------------------------------	---	---	------

Note: This housing is to be used along with suitable highbay/mediumbay reflector to make complete luminaires.



Product Code	Luminaire Type	Lamp Type	Standard Packaging	Unit Price ₹
--------------	----------------	-----------	--------------------	--------------

## Vertical mounting integral highbay/mediumbay luminaire

▶ 162190	BJHBI/MBI 250 MV Housing	HPMV 250W	4	3390
▶ 162191	BJHBI/MBI 400 MV Housing	HPMV 400W	4	4310
▶ 162192	BJHBI/MBI 150 SV Housing	HPSV 150W	4	3420
▶ 162202	BJHBI/MBI 150 W MH(E40) Housing	MH 150W E 40	4	3450
▶ 162193	BJHBI/MBI 250SV Housing	HPSV 250W	4	4540
▶ 162194	BJHBI/MBI 250 MH Housing	MH 250W	4	4560
022363	BJHBI/MBI 400 SV Housing	HPSV 400W	4	6250
▶ 022359	BJH/MBI 400 MH Housing	MH 400W	4	6280
162205	BJHBI/MBI 400 MMH Housing*	MMH 400W	4	4590

Note: This housing is to be used along with suitable Highbay/Midbay reflector to make complete luminaire.

\*MMH Luminaire are suitable for MV gear based MH Lamp



## Side mounting integral highbay/mediumbay luminaire

	BJHBIS/MBIS 11 250 SV housing complete			5390
168985	BJHBIS/MBIS 11 250 SV housing WOB	HPSV 250W	4	2640
169677	BJOS 250 SV/MH		4	2750
	BJHBIS/MBIS 11 250 MH housing complete			5420
168991	BJHBIS/MBIS 11 250 MH housing WOB	HPSV 250W E	4	2670
169677	BJOS 250 SV/MH		4	2750
	BJHBIS/MBIS 11 250 MMH housing complete			4510
169066	BJHBIS/MBIS 11 250 MMH housing WOB	MMH SE 250W	4	2610
161698	BJOS MMH 250		4	1900
	BJHBIS/MBIS 11 400 MMH housing complete			5580
168992	BJHBIS/MBIS 11 400 MMH housing WOB	MMH SE 400W	4	2630
161699	BJOS MMH 400		4	2950
	BJH/MBIS 400 SV housing complete			8420
169085	BJH/MBIS 400 SV housing WOB	HPSV 400W	4	4430
169233	BJOS 400 SV/MH		4	3990
	BJH/MBIS 400 MH TE housing complete			8450
169086	BJH/MBIS 400 MH TE housing WOB	MH 400W	4	4460
169233	BJOS 400 SV/MH		4	3990

Note: This housing is to be used along with suitable highbay/midbay reflector to make complete luminaire. For Industrial induction lighting refer induction section.

\*MMH Luminaire are suitable for MV gear based MH Lamp



Product Code	Luminaire Type	Lamp Type	Standard Packaging	Unit Price ₹
--------------	----------------	-----------	--------------------	--------------

#### 'DHRUV' Front opening integral highbay/mediumbay luminaire

	<b>BJH/MBIF 150 MH housing Complete</b>			<b>5340</b>
169069	BJH/MBIF 150 MH housing WOB	MH SE 150W	4	3540
162109	BJOS 150 SV/MH		4	1800
	<b>BJH/MBIF 250 SV housing Complete</b>			<b>6380</b>
169070	BJH/MBIF 250 SV housing WOB	HPSV 250W	4	3630
169677	BJOS 250 SV/MH		4	2750
	<b>BJH/MBIF 250 MH housing Complete</b>			<b>6410</b>
169071	BJH/MBIF 250 MH housing WOB	MH SE 250W	4	3660
169677	BJOS 250 SV/MH		4	2750

Note: This housing is to be used along with suitable highbay/midbay reflector to make complete luminaire. For Industrial induction lighting refer induction section.



#### DHRUV - front opening integral highbay/mediumbay luminaire

	<b>BJH/MBIF 400 MMH housing Complete</b>			<b>6560</b>
169065	BJH/MBIF 400 MMH housing WOB	MMH SE 400W	4	3610
161699	BJOS 400 MMH		4	2950

Note: This housing is to be used along with suitable highbay/midbay reflector to make complete luminaire. For Industrial induction lighting refer induction section.

\*MMH Luminaire are suitable for MV gear based MH Lamp



#### Highbay reflectors

▶ 161492	Anodised highbay aluminium 11 reflector	-	4	1550
----------	---	---	---	------



#### Midbay reflectors

162048	Anodised midbay aluminium 11 reflector	-	4	1550
--------	--	---	---	------



# Industrial lighting

Product Code	Luminaire Type	Lamp Type	Standard Packaging	Unit Price ₹
--------------	----------------	-----------	--------------------	--------------

## Highbay reflectors

- ▶ 161493 Totally enclosed anodised highbay aluminium 11 reflector

Reflector | Encloser

4 4 2530



## Midibay reflectors

- ▶ 162049 Totally enclosed anodised midbay aluminium 11 reflector

Reflector | Encloser

4 4 2530







Product Code	Luminaire Type	Lamp Type	Standard Packaging	Unit Price ₹
--------------	----------------	-----------	--------------------	--------------

**Flameproof bulkhead luminaire**

20082	BJFB 150/200 ES (LM6)	GLS 200W ES	1	8760
-------	-----------------------	-------------	---	------

Epoxy finish LM6 aluminium housing with heat resistant and toughened flat glass cover.

Note: Use separate appropriate flameproof control gear for HID lamp luminaire.



**Flameproof fluorescent luminaire**

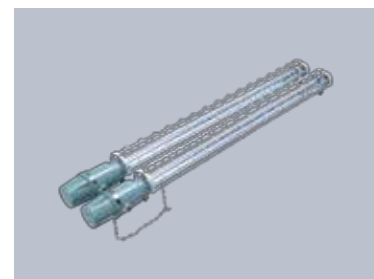
538548	BJFFTL 128	1x28 T5 FTL	1	15660
530602	BJFFTL 228	2x28W T5 FTL	1	30210



**Flameproof fluorescent luminaire**

169646	BJEXFTL 136	1x36W FTL	1	11260
169647	BJEXFTL 236	2x36W FTL	1	22800

Epoxy finish LM6 aluminium housing with heat resistant tubular glass cover held in two aluminium cups, with built-in control gear accessories.

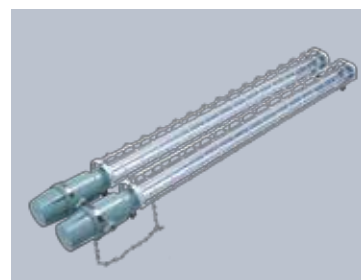


Product Code	Luminaire Type	Lamp Type	Standard Packaging	Unit Price ₹
--------------	----------------	-----------	--------------------	--------------

### Reflector for above luminaires

169770	SE Reflector for BJEXFTL 136/140	-	-	1160
169769	SE Reflector for BJEXFTL 236/240	-	-	1690

\*Powder coated grey outside and white inside reflector



### Flameproof non-integral wellglass luminaire

022792	BJFW-80/125 MV NI ES LM6	HPMV 80/125W ES	1	7840
168836	BJFW 223 CFL RF NI	2x23W Retrofit CFL	1	8030

Epoxy finish LM6 aluminium alloy housing with heat resistant and toughened glass cover, painted MS wire guard and eye bolt.

Note: Use separate appropriate flameproof control gear for HID lamp luminaire.



### Flameproof non-integral wellglass luminaire

168819	BJFW 150 SV CA NI	HPSV 150W	1	9440
022770	BJFW-250 MV NI LM6	HPMV 250W	1	9240
020188	BJFW-400 MV NI LM6	HPMV 400W	1	23110
168911	BJFW 250 SV (NI) LM6	HPSV 250W	1	23580
168908	BJFW 400 SV CA (NI) LM6	HPSV 400W	1	23580

Epoxy finish LM6 aluminium alloy housing with heat resistant and toughened glass cover, painted MS wire guard and eye bolt.

Note: Use separate appropriate flameproof control gear for HID lamp luminaire.



### Flameproof non-integral wellglass luminaire

169615	BJFW 400 MH NI LM6	HPMV 400W	1	14640
--------	--------------------	-----------	---	-------

Epoxy finish LM6 aluminium alloy housing with heat resistant and toughened glass cover, painted MS wire guard and eye bolt.

Note: Use separate appropriate Flameproof control gear for HID lamp luminaire.



### Flameproof integral wellglass luminaire

162251	BJFW 70 MH (I)	70W MH	1	10970
162249	BJFW 70 SV (I)	70W SV	1	10940
169614	BJFW 250 MV (I) ES	HPMV 250	1	17100
169696	BJFW 250 MH (I)	MH 250	1	18800

Epoxy finish LM6 aluminium alloy housing with a heat resistant & toughened glass cover, built in control gear, painted MS wire guard & eye bolt.



Product Code	Luminaire Type	Lamp Type	Standard Packaging	Unit Price ₹
--------------	----------------	-----------	--------------------	--------------

#### Flameproof integral wellglass luminaire

169872	BJFW 70 SV I.	HPSV 70W ES	1	On Request
169613	BJFW 80 MV I.	HPMV 80W ES	1	9570
169632	BJFW 125 MV I.	HPMV 125W ES	1	9600

Epoxy finish LM6 aluminium alloy housing with a heat resistant & toughened glass cover, built in control gear, painted MS wire guard & eye bolt.



#### Flameproof integral wellglass luminaire

020191	BJFW-250 MV CA (I)	HPMV 250W	1	13790
162250	BJFW-150 SV (I)	HPSV 150W	1	14080
162148	BJFW 150 MH (I)	HPMV 150W	1	14110



#### Increased safety non-integral wellglass luminaire

020104	BJISW 80/125 MV NI	HPMV 80W/125W	1	5430
-	BJISW 70 SV NI	HPSV 70W	1	on request

Epoxy finish LM6 aluminium alloy housing with heat resistant glass cover, painted MS wire guard and eye bolt.

Note: Use separate appropriate increased safety control gear for HID lamp luminaire.



#### Increased safety integral wellglass luminaire

020078	BJISW 80 MV (I)	HPMV 80W	1	7400
020079	BJISW 125 MV (I)	HPMV 125W	1	7430
020080	BJISW 70SV (I)	HPSV 70W	1	7520

Epoxy powder coated die-cast aluminium housing with adjustable swing arrangement & enclosed with diffused toughened glass cover.



#### Increased safety non-integral wellglass luminaire

160396	BJISW 250 MV/150SV NI LM 6	HPMV 250W/150W SV	1	6510
--------	----------------------------	-------------------	---	------

Epoxy finish LM6 aluminium alloy housing with heat resistant and glass cover, painted MS wire guard and eye bolt.

Note: Use separate appropriate increase safety control gear for HID lamp luminaire.



Product Code	Luminaire Type	Lamp Type	Standard Packaging	Unit Price ₹
<b>Flameproof control gear box</b>				
022800	BJFC-80 MV CA	HPMV 80W	1	8800
022801	BJFC-125 MV CA	HPMV 125W	1	8850
020204	BJFC-70 SV (LM6)	HPSV 70W	1	8930
168820	BJFC 150 SV CA	HPSV 150W	1	9710
168906	BJFC 250 SV (LM6)	HPSV 250W	1	11150
169287	BJFC 250 MH (LM6)	MH 250W	1	11180
020187	BJFC 400 MV (LM6)	HPMV 400W	1	10610
162604	BJFC 400 SV (LM6)	HPSV 400W	1	12430

Epoxy finish LM6 aluminium alloy housing with accessories and three cable entries.

Note: To be used with suitable luminaire.



### Flameproof control gear box

169643	BJFC-250 MV CA	HPMV 250W	1	9080
169616	BJFC 400 MH (LM6)	MH 400W	1	12350
169678	BJFC 400 SV	HPSV 400W	1	on request
169679	BJFC 400 MV	HPMV 400W	1	9700



### Flame proof non-integral flood light

169644	BJFFL 250 NI	HPMV/HPSV/MH 250W	1	18760
169645	BJFFL 400 NI	HPMV/HPSV/MH 400W	1	28610

Epoxy finish LM6 aluminium alloy housing with heat resistant and toughened glass cover, mounting bracket.



### Flame proof junction box

020206	BJFJB 100 - 4 WAY (LM6)	-	1	2430
--------	-------------------------	---	---	------

Epoxy finish LM6 aluminium alloy housing with accessories and three cable entries.



Note:

1. All the un-used cable entries must be sealed by approved plugs.
2. Only approved Flameproof double compression cable glands must be used.
3. Fittings are required to be maintained as per special code of practice under explosive environment as recommended from time to time. Accidents arising out of improper maintenance shall be beyond our scope of guarantee.



Product Code	Luminaire Type	Lamp Type	Standard Packaging	Unit Price ₹
--------------	----------------	-----------	--------------------	--------------

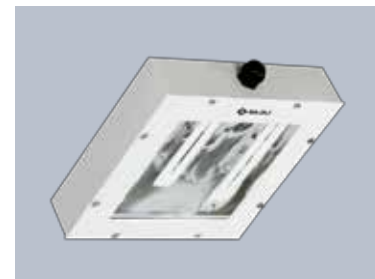
**Recess mounting front opening cleanroom luminaire with screwless bottom frame**

538921	BPRF 236 C LHD TG SL	2x36W 4 Pin 'L' Type CFL	1	8710
538922	BPRF 336 C LHD TG SL	3x36W 4 Pin 'L' Type CFL	1	9610



**Surface mounting front opening cleanroom luminaire suitable for twin 18W CFL**

530869	BPSF 218 C LHD	2X18W 'L' Type CFL	1	5050
--------	----------------	--------------------	---	------



**Surface mounting front opening cleanroom luminaire suitable for twin/triple CFL**

530871	BPSF 236 C LHD	2x36W 4 Pin 'L' Type CFL	1	8070
530872	BPSF 336 C LHD	3x36W 4 Pin 'L' Type CFL	1	9100



Product Code	Luminaire Type	Lamp Type	Standard Packaging	Unit Price ₹
--------------	----------------	-----------	--------------------	--------------

**Surface mounting front opening cleanroom luminaire suitable for twin 36W FTL**

530867	BPSF 02 236 F LHD	2x36W FTL	1	7880
--------	-------------------	-----------	---	------



**Surface mounting front opening cleanroom luminaire suitable for twin 36W FTL**

530860	BPRF 218 C LHD	2x18W 4 Pin L Dulux 'L' Type CFL	1	5150
--------	----------------	----------------------------------	---	------



**Recess mounting front opening cleanroom luminaire suitable for twin/triple CFL**

530861	BPRF 236 C LHD	2x36W 4 Pin 'L' Type CFL	1	7670
530862	BPRF 336 C LHD	3x36W 4 Pin 'L' Type CFL	1	8600



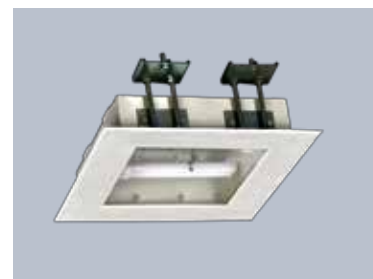
**Recess mounting front opening cleanroom luminaire suitable for twin FTL**

530859	BPRF 02 236 F LHD	2X36W FTL	1	9070
--------	-------------------	-----------	---	------



**Recess mounting rear opening cleanroom luminaire suitable for twin 18W CFL**

530873	BPRR 218 C LHD	2x18W 4 Pin Dulux 'L' Type CFL	1	7060
--------	----------------	--------------------------------	---	------



Product Code	Luminaire Type	Lamp Type	Standard Packaging	Unit Price ₹
--------------	----------------	-----------	--------------------	--------------

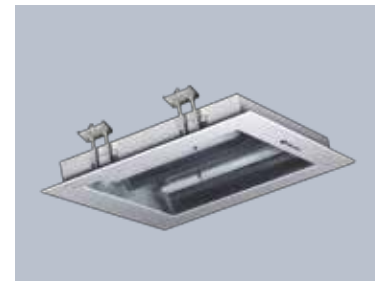
**Recess mounting rear opening cleanroom luminaire suitable for twin 36W CFL**

530866	BPRR 02 236 C LHD	2x36W 4 Pin 'L' Type CFL	1	8540
--------	-------------------	--------------------------	---	------



**Recess mounting rear opening cleanroom luminaire suitable for twin/triple 36W CFL**

530864	BPRR 236 C LHD	2x36W 4 Pin 'L' Type CFL	1	9970
530865	BPRR 336 C LHD	3x36W 4 Pin 'L' Type CFL	1	10900



Note: Above luminaires are with PMMA acrylic bottom cover. Alternative with toughened glass also available. Prefix TG.



# cityscape lighting

street lighting

area lighting

induction lighting

landscape lighting





## street lighting



Product Code	Luminaire Type	Lamp Type	Standard Packaging	Unit Price ₹
--------------	----------------	-----------	--------------------	--------------

### 'MOMENTUM' Single piece, cast aluminium, top opening and integral luminaires with side/top mounting option (IP66)

	BGEST 250 SV IP66 LH Complete (MOM)			15140
180094	BGEST 250 SV IP66 LH WOB	HPSV T 250W	1	12390
169677	BJOS 250 SV/MH	-	6	2750
	BGEST 250 MH IP66 LH Complete (MOM)			15170
180288	BGEST 250 MH IP66 (LH) WOB	MH T 250W	1	12420
169677	BJOS 250 SV/MH	-	6	2750
	BGEST 400 MH IP66 LH Complete (MOM)			16450
180320	BGEST 400 MH IP66 (LH) WOB	MH T 400W	1	12460
169233	BJOS 400 SV/MH	-	4	3990

Top opening single piece, integral, grey powder coated die-cast aluminium housing, pot optics reflector, side entry/pole mounting arrangement and accessories. Option of curve glass available.



### AQUA ROADWAY LUMINAIRES - 'PEARL' (IP66)

Single piece, powder coated housing with clear curved glass with pressure die cast aluminium side/top with mounting option

	BJPRL 150 SV Complete			13600
169282	BJPRL 150 SV WOB	HPSV T 150W	1	11800
162109	BJOS 150 SV/MH	-	8	1800



Product Code	Luminaire Type	Lamp Type	Standard Packaging	Unit Price ₹
--------------	----------------	-----------	--------------------	--------------

**AQUA ROADWAY LUMINAIRES - 'PEARL' (IP66)**

	BJPRL 250 SV Complete			14550
169283	BJPRL 250 SV WOB	HPSV T 250W	1	11800
169677	BJOS 250 SV/MH		6	2750



**'OPTIMA' Single piece, high pressure die-cast aluminium with heat resistant, toughened curved glass**

	BJORL 150W SV/MH Complete			11210
169439	BJORL 150W WOB	HPSV/MH-T 150W	1	9410
162109	BJOS 150 SV/MH	-	6	1800



	BJORL 250W SV/MH Complete			12260
169438	BJORL 250W WOB	HPSV/MH-T 250W	1	9510
169677	BJOS 250 SV/MH	-	6	2750

	BJORL 400W SV/MH Complete			13580
169437	BJORL 400W WOB	HPSV 400W		9590
169233	BJOS 400 SV/MH	-	4	3990

Precision optical system consisting of aluminum reflector of high purity, electro chemically brightened and anodized.

**Single piece, cast aluminium with full glass cover integral luminaires (IP66)**

	BGEST 70 SV FG SHN (IP66) Complete			5110
188625	BGEST 70 SV FG SHN IP66 WOB	HPSV T 70W	1	3910
169408	BJOS 70 SV/MH	-	16	1200



	BGEST 150 SV FG SHN (IP66) Complete			6150
▶ 169654	BGEST 150 SV FG SHN (IP66) WOB (E40)	HPSV T 150W	1	4350
162109	BJOS 150 SV/MH	-	8	1800

	BGEST 150 MH FG SHN (IP66) Complete			6180
169689	BGEST 150 MH FG SHN IP66 WOB	MH T 150W	1	4380
162109	BJOS 150 SV/MH	-	8	1800

	BGEST 250 SV FG SHN (IP66) Complete			7080
▶ 188631	BGEST 250 SV WN PDC IP66 WOB	HPSV T 250W	1	4330
169677	BJOS 250 SV/MH	-	6	2750

Precision optical system consisting of aluminum reflector of high purity, electro chemically brightened and anodized.

Product Code	Luminaire Type	Lamp Type	Standard Packaging	Unit Price ₹
--------------	----------------	-----------	--------------------	--------------

**Single piece, integral, grey powder coated pressure die-cast aluminium housing, pot optics reflector with full glass cover and accessories.**

	BGEST 250 SV FG SHN (IP66) PDC Complete			7080
188631	BGEST 250 SV FG SHN (IP66) PDC WOB	HPSV T 250W	1	4330
169677	BJOS 250 SV/MH	-	6	2750
	BGEST 250 MH FG SHN (IP66) PDC Complete			7110
188632	BGEST 250 MH FG SHN (IP66) PDC WOB	MH T 250W	1	4360
169677	BJOS 250 SV/MH	-	6	2750



**Single piece, cast aluminium with full glass cover integral luminaires (IP65)**

180421	BGEST 85 RF CFL FG BC	1x85W Retrofit CFL	1	4440
180422	BGEST 85 RF CFL FG E27	1x85W Retrofit CFL	1	4560
180423	BGEST 85 RF CFL FG E40	1x85W Retrofit CFL	1	4640

Pressure die cast housing with epoxy power coated dark graphite grey colour finish. Prismatic polycarbonate cover with individual LED lenses.



**Single piece, integral, grey powder coated pressure die-cast aluminium housing, pot optics reflector with full glass cover and accessories.**

			Housing   Acrylic		
	BGEST 70 SV DD Complete				4370
184381	BGEST 70 SV DD WOB	HPSV T 70W	4	8	3170
169408	BJOS 70 SV/MH	-	-	16	1200
	BGEST 150 SV DD Complete				6990
184391	BGEST 150 SV DD WOB	HPSV T 150W	4	8	5190
162109	BJOS 150 SV/MH	-	-	8	1800

Single piece, deep drawn, sheet aluminium housing, pot optics reflector with acrylic bowl cover and accessories.



**Integral, sheet aluminium luminaires with sand blasted built in reflector & full glass**

	BJMSDT 03 70 SV IP65 Complete			4160
162590	BJMSDT 03 70 SV IP65 WOB	HPSV T 70W	2	2960
169408	BJOS 70 SV/MH	-	6	1200



Product Code	Luminaire Type	Lamp Type	Standard Packaging	Unit Price ₹
--------------	----------------	-----------	--------------------	--------------

**Integral, sheet aluminium luminaires with sand blasted built in reflector & full glass**

	<b>BJMSDT 03 70 SV IP65 Complete</b>			<b>4190</b>
162590	BJMSDT 03 70 SV IP65 WOB	HPSV T 70W	2	2990
169408	BJOS 70 SV/MH	-	6	1200
	<b>BJMSDT 03 70 MH IP65 Complete</b>			<b>4190</b>
168821	BJMSDT 03 70 MH IP65 WOB	MH T 70W	2	2990
169408	BJOS 70 SV/MH	-	6	1200
	<b>BJMSDT 03 250 SV IP65 Complete</b>			<b>7560</b>
160802	BJMSDT 03 250 SV IP65 WOB	HPSV T 250W	2	4810
169677	BJOS 250 SV/MH	-	6	2750



**Integral, sheet aluminium luminaires with side reflectors**

		Housing   Acrylic			
	<b>BJMSD 02 70 SV Complete</b>			<b>4340</b>	
160006	BJMSD 02 70 SV WOB	HPSV 70W	2	8	3140
169408	BJOS 70 SV/MH	-	-	16	1200
	<b>BJMSD 04 150 SV Complete</b>			<b>5810</b>	
▶ 162132	BJMSD 04 150 SV WOB	HPSV 150W	2	4	4010
162109	BJOS 150 SV/MH	-	-	8	1800
	<b>BJMSD 04 250 SV Complete</b>			<b>7210</b>	
▶ 162133	BJMSD 04 250 SV WOB	HPSV 250W	2	4	4460
169677	BJOS 250 SV/MH	-	-	6	2750



Integral sheet aluminium housing in grey hammertone stove enamelled finish outside and white inside, with aluminium side reflectors, clear acrylic bowl and accessories.

**Energy conservation T5 lamp roadway lighting luminaires**

538793	BTSLF 414 DD	4x14W T5	1	7290
538794	BTSLF 424 DD	4x24W T5	1	7580
▶ 539477	BTSLF 424 MS N	4x24W T5	1	6070

Muncell grey shade finish housing with clear acrylic bowl & accessories. (IP65 Version also available)



**Energy conservation T5 lamp roadway lighting luminaires**

		Housing   Acrylic			
▶ 530776	BTSLF 128 T5	1x28W T5	10	20	2190
530777	BTSLF 228 T5	2x28W T5	10	20	2490

Muncell grey stove enamelled finish sheet steel housing with stove enamelled CRCA sheet steel reflector cover, ribbed acrylic bowl cover and accessories.



Product Code	Luminaire Type	Lamp Type	Standard Packaging	Unit Price ₹
--------------	----------------	-----------	--------------------	--------------

#### Energy conservation T5 lamp roadway lighting luminaires

530710	BTSLF 124 MS	1x24W T5	4	3020
530711	BTSLF 214 MS	2x14W T5	4	3450
▶ 530712	BTSLF 224 MS	2x24W T5	4	3600

Muncell grey stove enamelled finish housing with clear acrylic bowl & accessories.



#### CFL roadway lighting luminaires

▶ 530084	BJSFL 236 CFL WEB2	2x36W 'L' type CFL	4	2770
▶ 162278	BJSFL 85 RF CFL E27	1x85W Retrofit CFL	4	2030

Epoxy black powder coated sheet steel housing, with epoxy white powder coated CRCA sheet steel gear tray, clear acrylic cover and accessories.



#### CFL roadway lighting luminaires

▶ 530047	BJSFLA 136 CFL WEB1	1x36W 'L' type CFL	8	1830
----------	---------------------	--------------------	---	------

Epoxy black powder coated sheet aluminium housing, with epoxy white powder coated CRCA sheet steel gear tray, clear acrylic cover and accessories.



#### Note:

- Suffix in cat. WOB without ballast, suffix in cat LPF - without capacitor.
- Suffix in cat. MH SE - single ended halide lamp, suffix in cat MH DE - double ended metal halide lamp.
- Suffix in cat. FFG full frame glass cover, suffix in cat. FG - glass cover.





area lighting

Product Code	Luminaire Type	Lamp Type	Standard Packaging	Unit Price ₹
--------------	----------------	-----------	--------------------	--------------

**Halogen floodlight luminaires**

112522	BJQF 500	Halogen 500	8	830
▶ 112523	BJQF 1000	Halogen 1000	8	1800

Black powder coated die-cast aluminium housing, heat resistant toughened clear glass cover with aluminium reflector.



**Symmetrical beam non-integral floodlight luminaires**

169348	BJEF 15 S*	250 SV/MH/400W MH	1	5420
▶ 162136	BJEF 21 S*	HID Lamp upto 400W	1	6790

Grey hammertone stove enamelled finished die-cast aluminium housing, spun aluminium reflector, heat resistant toughened clear glass cover.

\*Use appropriate control gear box as per HID lamp wattage.



**Symmetrical beam non-integral floodlight luminaires**

▶ 161297	BJENF 14*	Tubular HID Lamp upto 400W	1	4700
----------	-----------	----------------------------	---	------

Grey powder coated die-cast aluminium housing, faceted anodised aluminium reflector, heat resistant toughened clear glass cover.

\*Use appropriate control gear box as per HID lamp wattage.



Product Code	Luminaire Type	Lamp Type	Standard Packaging	Unit Price ₹
--------------	----------------	-----------	--------------------	--------------

#### Asymmetrical beam non-integral floodlight luminaires

20155	BJEF 22 CA (RO) 1K*	HID Lamp upto 1000W	1	13460
-------	---------------------	---------------------	---	-------

Black powder coated die-cast aluminium housing, faceted aluminium reflector, heat resistant toughened clear glass.

\* Use appropriate control gear box as per HID lamp wattage.



#### Asymmetrical beam integral floodlight luminaires

▶ 184400	BGEMF 70 SV/MH SE	HPSV/MH T 70W	4	4260
▶ 184470	BGEMF 70 MH DE WS II	MH DE 70W	4	4660
▶ 184431	BGEMF 150 MH DE WS II	MH DE 150 W	2	8340

Grey powder coated die-cast aluminium housing, built-in control gear, faceted anodised aluminium reflector, heat resistant toughened clear glass cover.



#### Asymmetrical beam integral floodlight luminaires

184411	BGEMF 150 SV	HPSV T 150W	1	8030
--------	--------------	-------------	---	------

Grey powder coated die-cast aluminium housing, built-in control gear, faceted anodised aluminium reflector, heat resistant toughened clear glass cover.



#### Asymmetrical beam integral floodlight luminaires

	BGEMFS 250W MH Complete			10220
▶ 180378	BGEMFS 250W MH WOB	MH T 250W	1	7470
169677	BJOS 250 SV/MH	-	6	2750
	BGEMFS 250W SV Complete			10190
▶ 180377	BGEMFS 250W SV WOB	HPSV T 250W	1	7440
169677	BJOS 250 SV/MH	-	6	2750
	BGEMFS 400W MH (O.L) Complete			11580
▶ 180380	BGEMFS 400W MH (O.L) WOB	HPSV T 400W	1	7590
169233	BJOS 400 SV/MH	-	4	3990
	BGEMFS 400W SV Complete			11550
▶ 180379	BGEMFS 400W SV WOB	MH T 400W	1	7560
169233	BJOS 400 SV/MH	-	4	3990

Grey powder coated die-cast aluminium housing, built-in control gear, faceted anodised aluminium reflector, heat resistant toughened clear glass cover.

Note: \*MMH T luminaire with mercury base ballast.



Product Code	Luminaire Type	Lamp Type	Standard Packaging	Unit Price ₹
--------------	----------------	-----------	--------------------	--------------

**Asymmetrical beam integral, compact floodlight luminaire**

	BJENF 400 MH Complete			11540
169347	BJENF 400 MH WOB	MH T 400	1	7550
169233	BJOS 400 SV/MH	-	4	3990

Grey powder coated die-cast aluminium housing, built-in control gear, faceted anodised aluminium reflector, heat resistant toughened clear glass cover.

Note: \*MMH T luminaire with mercury base ballast.



**Asymmetrical beam low glare non-integral floodlight luminaires**

▶ 169532	BARNF 24	Tubular Twin HID Lamp upto 400W	1	6770
----------	----------	---------------------------------	---	------

Pressure Die Cast aluminum housing, anodized aluminum reflector, heat resistant toughened clear glass cover.

\* Use appropriate control gear box for as per HID lamp wattage.



**Integral hoarding lighting luminaires**

	BJFL 70 SV S/AS Complete			7450
160341	BJFL 70 SV S WOB	HPSV T 70W	2	6250
169408	BJOS 70 SV/MH	-	16	1200

Black powder coated die-cast aluminium housing, built-in control gear, aluminium reflector, heat resistant toughened clear glass cover.

Note: \*MMH T luminaire with mercury base ballast.



**Integral hoarding lighting luminaires**

	BJFL 70 MH SE S/AS Complete			7480
160508	BJFL 70 MH SE S WOB	MH SE 70W	2	6280
160553	BJFL 70 MH SE AS WOB	MH SE 70W	2	6280
169408	BJOS 70 SV/MH	-	16	1200

Black powder coated die-cast aluminium housing, built-in control gear, aluminium reflector, heat resistant toughened clear glass cover.

Note: \*MMH T luminaire with mercury base ballast.



**Integral hoarding lighting luminaires**

	BJFL 11 150 MH DE WSII Complete			5880
▶ 161656	BJFL 11 150 MH DE WSII WOB	MH DE 150W	2	4080
162109	BJOS 150 SV/MH	-	8	1800

Black powder coated die-cast aluminium housing, built-in control gear, aluminium reflector, heat resistant toughened clear glass cover.





Product Code	Luminaire Type	Lamp Type	Standard Packaging	Unit Price ₹
--------------	----------------	-----------	--------------------	--------------

### Integral hoarding lighting luminaires

	BJFL 150 SV T S/AS Complete			7850
▶ 160351	BJFL 150 SV T S WOB	HPSV T 150W	2	6050
162109	BJOS 150 SV/MH	-	8	1800



### Integral Flood lighting luminaires

	BJFL 01 250 SV T S/AS Complete			7980
▶ 169398	BJFL 01 250 SV T S WOB	HPSV T 250W	1	5230
169677	BJOS 250 SV/MH	-	6	2750



	BJFL 01 250 MH T S/AS Complete			8010
▶ 169399	BJFL 01 250 MH T S WOB	MH T 250W	1	5260
169677	BJOS 250 SV/MH	-	6	2750

	BJFL 01 400 SV T S/AS Complete			9280
▶ 169400	BJFL 01 400 SV T S WOB	HPSV T 400W	1	5290
169404	BJFL 01 400 SV T AS WOB	HPSV T 400W	1	5290
169233	BJOS 400 SV/MH	-	4	3990

	BJFL 01 400 MH T S/AS Complete			9310
▶ 169401	BJFL 01 400 MH T S WOB	MH T 400W	1	5320
169405	BJFL 01 400 MH T AS WOB	MH T 400W	1	5320
169233	BJOS 400 SV/MH	-	4	3990

### integral flood lighting luminaire

	BJFL 01 400 MMH T S/AS Complete			8440
169782	BJFL 01 400 MMH T AS WOB*	MMH T 400W	1	5490
161699	400W MMH Ballast	-	6	2950

\*MMH T luminaire with mercury base ballast.



### Aviation obstruction light

▶ 20075	BJAOL 1 with Neon Lamp	Neon Lamp 75VA	1	11210
---------	------------------------	----------------	---	-------

Aviation yellow painted die-cast aluminium alloy housing, built-in 75VA step up transformer, heat resistant, clear thick glass and accessories.



Product Code	Luminaire Type	Lamp Type	Standard Packaging	Unit Price ₹
--------------	----------------	-----------	--------------------	--------------

**Aviation obstruction light**

▶ 24973	BJAOL 2 BC	GLS 2x100W BC	1	6070
---------	------------	---------------	---	------

Aviation yellow painted die-cast aluminium alloy housing, red coloured polycarbonate dome and accessories.



**Deep drawn HID lamp control gear boxes**

	BJCG 250 SV/MH DD Complete			5000
▶ 168462	BJCG 250 SV DD WOB	HPSV/MH 250W	2	2250
169677	BJOS 250 SV/MH	-	6	2750



	BJCG 400 SV DD Complete			6320
▶ 168463	BJCG 400 SV DD WOB	HPSV/MH 400W	2	2330
169233	BJOS 400 SV/MH	-	4	3990

Grey powder coated deep drawn CRCA sheet steel box with rubber gasket and accessories.

**Deep drawn HID lamp control gear boxes**

	BJCG 2x250 SV/MH DD Complete			9150
169494	BJCG 2x250 SV/MH DD WOB	HPSV/MH 250W	1	3650
169677	BJOS 250 SV/MH	-	6	2750



	BJCG 2x400 SV/MH DD Complete			11810
▶ 169495	BJCG 2x400 SV/MH DD WOB	HPSV/MH 400W	1	3830
169233	BJOS 400 SV/MH	-	4	3990

Two Ballast to be fitted in CA box

**Compact cast aluminium HID lamp control gear boxes**

168541	BJCG 150 SV/MH CA2	HPMV/MH 150W	2	4910
--------	--------------------	--------------	---	------

Grey powder coated die-cast aluminum box with rubber gasket and accessories.



**Compact cast aluminium HID lamp control gear boxes**

	BJCGB 250 SV/MH CA Complete			5750
▶ 168532	BJCGB 250 SV/MH CA WOB	HPMV/MH 250W	2	3000
169677	BJOS 250 SV/MH	-	6	2750



	BJCGB 400 SV/MH CA Complete			7170
▶ 168533	BJCGB 40 SV/MH CA WOB	HPMV/MH 400W	2	3180
169233	BJOS 400 SV/MH	-	4	3990

Product Code	Luminaire Type	Lamp Type	Standard Packaging	Unit Price ₹
--------------	----------------	-----------	--------------------	--------------

**Cast aluminium HID control gear boxes**

	BJCGB 2x250 SV/MH CA Complete			10540
160623	BJCGB 2x250 SV/MH CA WOB	HPMV/MH 2*250W	1	5040
169677	BJOS 2x250 SV/MH	-	6	2750
	BJCGB 2x400 SV/MH CA Complete			13250
160624	BJCGB 2x400 SV/MH CA WOB	HPMV/MH 2*400W	1	5270
169233	BJOS 2x400 SV/MH	-	4	3990

Two Ballast to be fitted in CA box





Product Code	Luminairez Type	Lamp Type	Standard Packaging	Unit Price ₹
--------------	-----------------	-----------	--------------------	--------------

**Induction canopy lighting luminaire**

	BJUCL 80 IL Complete			27060
169563	BJUCL 80 IL WOB	80W IL	1	7440
148246	BIL 806 C	-	-	9810
539354	BIB 806	-	-	9810

Recess mounting, die cast aluminium housing, along with driver suitable for 80W induction lamp.



**Induction high bay lighting luminaire**

	BLRI 80 IL Complete			33150
169572	BLRI 80 IL WOB	80W IL	1	13530
148246	BIL 806 C	-	-	9810
539354	BIB 806	-	-	9810



Product Code	Luminaire Type	Lamp Type	Standard Packaging	Unit Price ₹
--------------	----------------	-----------	--------------------	--------------

#### Induction highbay luminaire with faceted reflector

	<b>BJHBI 80 IL FC Complete</b>			<b>25430</b>
169587	BJHBI 80 IL FC TE WOB	80W IL	1	5810
148246	BIL 806 C	-	-	9810
539354	BIB 806	-	-	9810

	<b>BJHBI 120 IL FC Complete</b>			<b>28810</b>
169575	BJHBI 120 IL FC TE WOB	120W IL	1	5810
148247	BIL 120 C	-	-	11500
539355	BIB 1206	-	-	11500

	<b>BJHBI 150 IL FC Complete</b>			<b>28810</b>
169576	BJHBI 150 IL FC TE WOB	150W IL	1	5810
148248	BIL 150 C	-	-	11770
539356	BIB 1506	-	-	11770

	<b>BJHBI 200 IL FC Complete</b>			<b>31210</b>
169577	BJHBI 200 IL FC TE WOB	200W IL	1	5810
148249	BIL 200 C	-	-	12700
539357	BIB 2006	-	-	12700

Spun aluminium control gear housing with fluted polycarbonate refractor along with control gear for induction lamp. Polycarbonate bottom cover can be provided (optional).



#### Induction highbay luminaire with faceted luminaire

	<b>BJHBI 250 IL Complete</b>			<b>35480</b>
169754	BJHBI 250 IL FC TE	200W IL	1	22540
148258	BIL 2006	-	-	12940



#### Induction flood lighting luminaire

	<b>BJENF 200 IL NI Complete</b>			<b>37640</b>
169569	BJENF 200 IL NI	200W IL	1	10460
169571	BJCG 200 IL DD WOB	-	-	1780
148245	BIL 2006 R	-	-	12700
539357	BIB 2006	-	-	12700

Epoxy power coated die cast aluminium housing, suitable for 150W/200W induction lamp for effective asymmetrical beam control.

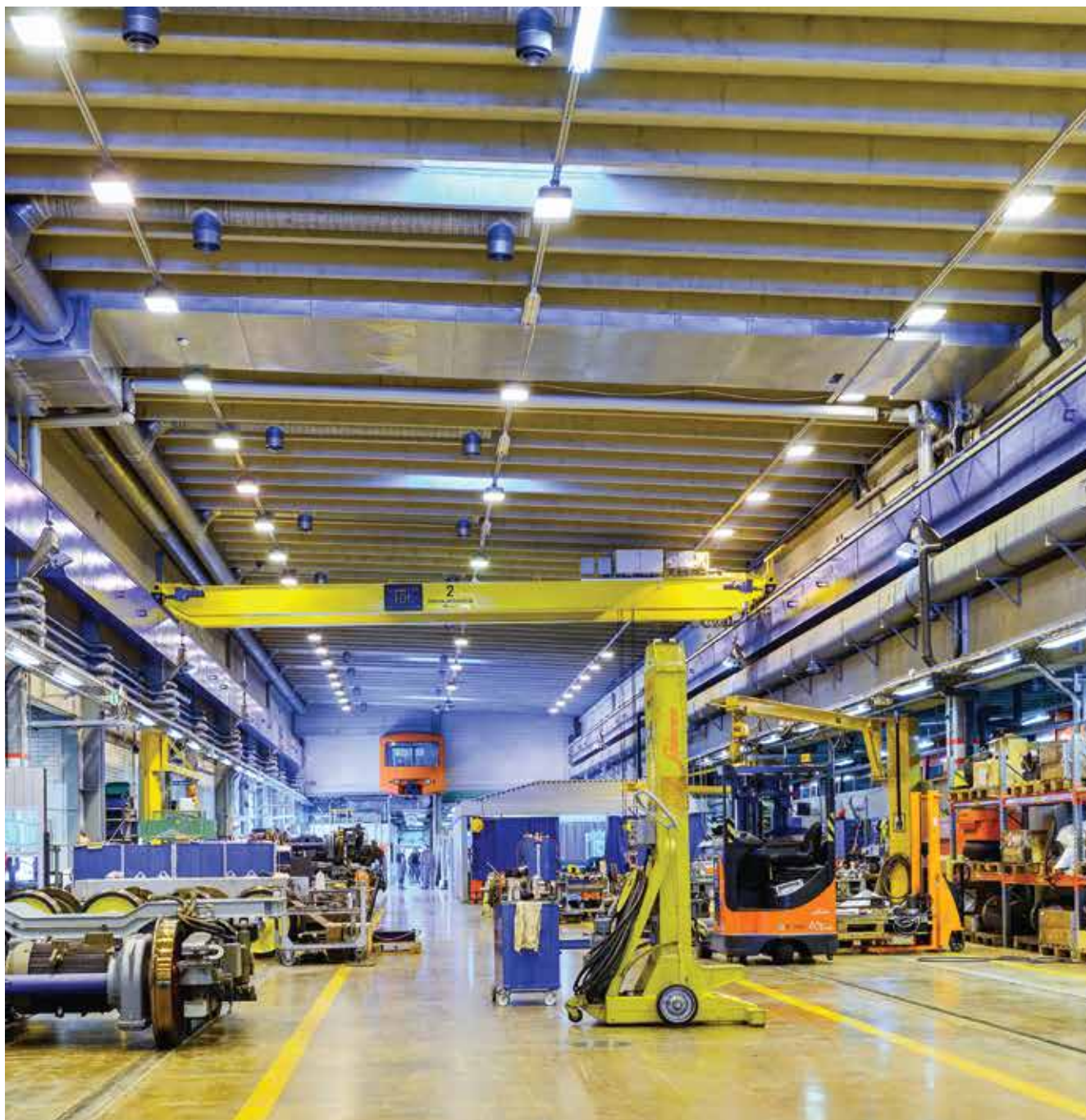


Product Code	Luminaire Type	Lamp Type	Standard Packaging	Unit Price ₹
--------------	----------------	-----------	--------------------	--------------

**Induction street lighting luminaire**

	BGEST 80 IL FG Complete			28000
169579	BGEST 80 IL FG WOB	80W IL	1	8380
148242	BIL 806 R	-	-	9810
539354	BIB 806	-	-	9810

Epoxy grey powder coated single piece die-cut aluminium housing and C.G. accessories. reflector for lamp. Electrochemically brightened, polished, and anodised finish aided pot optic aluminium.



## landscape lighting



Product Code	Luminaire Type	Lamp Type	Standard Packaging	Unit Price ₹
--------------	----------------	-----------	--------------------	--------------

### Integral CFL post top lanterns

▶ 160368	BJCPTI 118 Opal	1x18W 'D' type CFL	1	2980
160339	BJCPTI 118 Clear	1x18W 'D' type CFL	1	3790

Black ABS plastic spigot, spun aluminium canopy, with opal / clear acrylic diffuser and accessories.



### Integral CFL post top lanterns

▶ 160559	BJCPTI 218 Opal	2x18W 'D' type CFL	1	5600
160408	BJCPTI 218 Clear	2x18W 'D' type CFL	1	6550

Integral CFL post top lanterns 2x11 and PDC aluminium spigot for 2x18W version, spun aluminium canopy, with opal/clear acrylic diffuser and accessories.



### Integral CFL post top lanterns

▶ 162384	BJGLI 218 Clear	2x18W 'D' type CFL	1	6290
----------	-----------------	--------------------	---	------

Black ABS plastic spigot for 2x11 and cast aluminium spigot for 2x18W version, spun aluminium funnel shape with clear acrylic cover, light opening on canopy with baffles and accessories.



Product Code	Luminaire Type	Lamp Type	Standard Packaging	Unit Price ₹
--------------	----------------	-----------	--------------------	--------------

**Integral CFL post top lanterns**

▶ 160436	BRPTCI 118 Opal	1x18W 'D' type CFL	4	2520
▶ 160437	BRPTCI 118 Clear	1x18W 'D' type CFL	4	3330

Black ABS plastic spigot, spun aluminium canopy, with opal acrylic diffuser and accessories. Integral, Fedora hat post top lantern with clear / opal acrylic for single compact fluorescent lamp.



**'NEO' HID integral post top lanterns 'CELESTA'**

	BNCL 70 MH C Complete			14330
110296	BNCL 70 MH C WOB	MH T 70W	1	13130
169408	BJOS 70 SV/MH	-	-	1200

	BNCL 70 MH O Complete			12390
110297	BNCL 70 MH O WOB	MH T 70W	1	11190
169408	BJOS 70 SV/MH	-	-	1200

	BNCL 150 MH C Complete			15080
110302	BNCL 150 MH C WOB	MH T 150W	-	13280
162109	BJOS 150 SV/MH			1800

Copper dust finish cast aluminium spigot and spun aluminium canopy fixed with clear / opal polycarbonate enclosure. 'C' - clear diffuser, 'O' - opal diffuser

"NEO" - CELESTA opal version is available with 85W retrofit CFL on request.



**'NEO' HID integral post top lanterns 'COSMOS'**

	BNCS 70 MH C Complete			12440
110330	BNCS 70 MH C WOB	MH T 70W	1	11240
169408	BJOS 70 SV/MH	-	-	1200

	BNCS 150 MH C Complete			13180
110334	BNCS 150 MH C WOB	MH T 150W	1	11380
162109	BJOS 150 SV/MH	-	-	1800

Copper dust finish cast aluminium spigot and spun aluminium canopy fixed with clear / opal polycarbonate enclosure

NEO' - COSMOS opal version is available with 85W retrofit CFL on request.



**Integral HID lamp post top lanterns**

	BJPTI 125 MV Complete			4890
162442	BJPTI 125 MV WOB	HPMV 125W	1	3640
161849	BJOR 125 MV	-	16	1250

Note: Power factor improvement capacitor can be supplied on request at extra cost.





Product Code	Luminaire Type	Lamp Type	Standard Packaging	Unit Price ₹
--------------	----------------	-----------	--------------------	--------------

#### Integral HID lamp post top lanterns

	BJPTI 70 SV Complete			5080
162443	BJPTI 70 SV WOB	HPSV 70W	1	3880
169408	BJOS 70 SV/MH	-	16	1200

	BJPTI 70 MH WOB Complete			5110
162444	BJPTI 70 MH WOB	-	1	3910
169408	BJOS 70 SV/MH	-	16	1200

Note: Power factor improvement capacitor can be supplied on request at extra cost.



#### Integral HID lamp post top lanterns

524821	Spigot for BJDPTI 125 MV LPF	HPMV 125W	4	2530
524830	Spigot for BJDPTI 70 SV/MH LPF	HPSV 70W	4	2900
▶ 024900	Diamond shape Roto Mould Diffuser*	-	1	2490

Note: \*Add Diamond Diffuser and spigot price for complete luminaires price.



#### Integral HID lamp post top lanterns

524821	Spigot for BJDPTI 125 MV LPF	HPMV 125W	4	2530
524830	Spigot for BJDPTI 70 SV/MH LPF	HPSV 70W	4	2900
024890	Spherical shape Roto Mould Diffuser*	-	1	2480

Note: \*Add Spherical Shape Diffuser and spigot price for complete luminaires price.



#### Integral HID lamp post top lanterns

▶ 524821	Spigot for BJDPTI 125 MV LPF	HPMV 125W	4	2530
▶ 524830	Spigot for BJDPTI 70 SV/MH LPF	HPSV 70W	4	2900
520035	Temple shape Roto Mould Diffuser*	-	1	-

Note: \*Add Temple Shape Diffuser and spigot price for complete luminaires price.



Product Code	Luminaire Type	Lamp Type	Standard Packaging	Unit Price ₹
--------------	----------------	-----------	--------------------	--------------

**'JUNO' integral post top lanterns**

	BJODCI 1170 SV Complete			6200
▶ 162159	BJODCI 1170 SV WOB	HPSV T 70W	1	5000
169408	BJOS 70 SV/MH	-	16	1200

	BJODCI 1170 MH Complete			6230
▶ 162160	BJODCI 1170 MH WOB	MH T 70W	1	5030
169408	BJOS 70 SV/MH	-	16	1200

	BJODCI 1170 MH DE Complete			6620
▶ 162161	BJODCI 1170 MH DE WOB	MH DE 70W	1	5420
169408	BJOS 70 SV/MH	-	16	1200

	BJODCI 150 MH (E40) Complete			9880
162512	BJODCI 150 MH (E40) WOB	MH T 150W	1	8080
162109	BJOS 150 SV/MH	-	8	1800

Copper dust painted cast aluminium spigot, spun aluminium canopy with clear acrylic cover and accessories.



**'JUNO - CLUSTER' integral accessories for post top lanterns**

	Centre pole mounting pipe assembly suitable for 3x70/150W SV/MH BJODC Rance400 SV/M and 3 nos. "J" pipe bracket	3x70/150/250/	1 Set	10840
--	---	---------------	-------	-------

	Centre Pole mounting Pipe assembly suitable for 3x250/400W HPSV/MH BJODC Rance and 3 nos. "J" pipe bracket	-	1 Set	21630
--	--	---	-------	-------

For making 3 luminaires black painted cluster, take the above luminaires prices of respective luminaire alongwith the accessories.

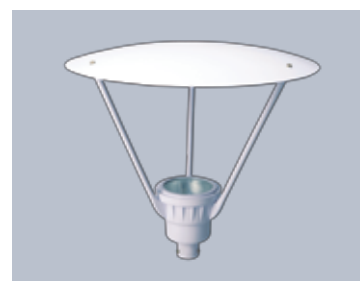
Note: Used appropriate control gear for non-integral luminaire.



**'INDIRECT LIGHT' integral post top lanterns**

	BRIL 22 70 MH DE Complete			15550
162562	BRIL 22 70 MH DE WOB	MH DE 70W	1	14350
169408	BJOS 70 SV/MH	-		1200

Novel design of lighting column suitable for 150W MH DE lamp. Eco friendly outdoor decorative and energy saving luminaire for 70/150W MH DE lamp.

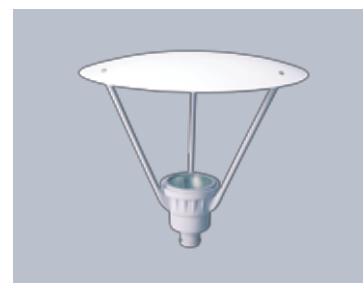


Product Code	Luminaire Type	Lamp Type	Standard Packaging	Unit Price ₹
--------------	----------------	-----------	--------------------	--------------

### Integral bollards

	BRIL 22 150 MH DE Complete			16220
162563	BRIL 22 150 MH DE WOB	MH DE 150W	1	14420
162109	BJOS 150 SV/MH	-		1800

Novel design of lighting column suitable for 150W MH DE lamp. Eco friendly outdoor decorative and energy saving luminaire for 70/150W MH DE lamp



### Integral bollards

111714	BECBL 03 118 CFL B	1x18W 'D' type CFL	1	8160
--------	--------------------	--------------------	---	------

Black epoxy powder coated cylindrical bollard with antiglare louvers diffuser in clear acrylic cover.



### Integral CFL bollards

▶ 160439	BRBOL 118 Clear	1x18W 'D' type CFL	1	7410
----------	-----------------	--------------------	---	------

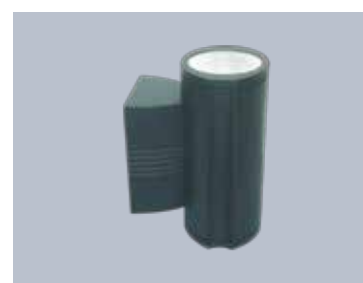
Black finish cylindrical shaped, unique design, integral decorative bollard with clear acrylic cover for single compact fluorescent lamp.



### Integral wall up-downlight luminaires

162599	BLWUD 70 MH T WOB	MH T 1x70W G12	4	12520
--------	-------------------	----------------	---	-------

Black epoxy powder coated aluminium housing with wall mounting bracket. Order electric ballast BEHS 70 .nxt (539123) Separately.



### Recess wall mounting luminaires

110139	BEGPL 118 CFL	1x18W 'D' type CFL	6	2470
--------	---------------	--------------------	---	------

Epoxy white powder coated aluminium housing with black powder coated aluminium anti-glare louver & frosted glass cover.



Product Code	Luminaire Type	Lamp Type	Standard Packaging	Unit Price ₹
--------------	----------------	-----------	--------------------	--------------

**Recess wall mounting luminaires**

110142	BEOPL 118 CFL	1x18W 'D' type CFL	6	2370
--------	---------------	--------------------	---	------

Epoxy white powder coated aluminium housing, black powder coated frame fixed with frosted glass cover.

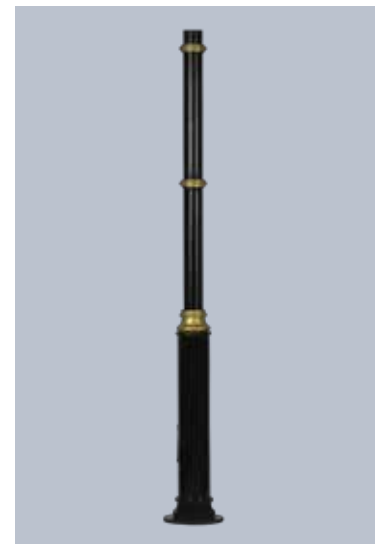


Product Code	Luminaires Type	Unit Price ₹
--------------	-----------------	--------------

**Decorative Pole**

110393	BJPL 01 300	30880
110395	BJPL 01 400	34310
110397	BJPL 01 500	43480
110398	BJPL 01 600	43970
110399	BJPL 01 700	47380

Black painted galvanised pole in different section and gold colour painted decorative rings.



**Decorative Pole**

110396	BJPL 02 300	41700
110407	BJPL 02 400	45130

Black painted galvanised pole in different section and gold colour painted decorative rings and decorative base ring.



Product Code	Luminaire Type	Unit Price ₹
--------------	----------------	--------------

**Decorative Pole**

112681	BJPL 700 WITH BRACKET	65000
Decorative pole with single arm		



**Decorative Pole**

112363	BJPL 04 350	22920
Black painted galvanised pole in different section and gold colour painted decorative rings and decorative base ring.		





Product Code	Luminaire Type	Lamp Type	Standard Packaging	Unit Price ₹
--------------	----------------	-----------	--------------------	--------------

## BALLAST

### 'ICON' Electronic ballast - ICON Family

539207	Icon 136	1x36 T8/PLL, 1x40 T12	10	250
539315	Icon 113	1x9/11/13W CFL 2 Pin/4 Pin	30	240
539316	Icon 118	1X18W CFL 2 Pin/4 Pin 2 Pin/4 Pin	30	240
539319	Icon 124 Sleek	1x24W T5	10	440
539320	Icon 128 Sleek	1x28W T5	10	440
539318	Icon 136 Sleek	1x36W T8/PLL, 1x40W T12	10	360
539321	Icon 228 Slender	2x28W T5	10	790
539322	Icon 236 Slender	2x36W T8/PLL, 2x40W T12	10	760



Electronic ballast suitable for 24 hrs operation. High power factor >0.94, over voltage protection 48 hrs at 340V and 2 hrs at 360V. Ideal for industrial applications.

### Commercial electronic ballast for CFL/FTL lamps

530881	BJHF 109/11/10/13	1x9/10/11/13W 'S' type CFL	60	245
530882	BJHF 118	1x18W 'D' type CFL	60	245

HF ballast made of engineering plastic, pf>0.9. Not for industrial use. Suffix "S" in cat. reference indicates Slim ballast.



Product Code	Luminaire Type	Lamp Type	Standard Packaging	Unit Price ₹
--------------	----------------	-----------	--------------------	--------------

#### 'REGULAR' electronic ballast

530287	BJHF 118/120 P	1x18/20W FTL	24	600
530107	BJHF 136/140 P	1x36/40W FTL	24	600
530108	BJHF 236/240 P	2x36/40W FTL	24	720
530066	BJHF 128 P	1x28W T5	24	540
530067	BJHF 228 P	2x28W T5	24	760
530658	BJHF 224 P	2x24W T5	24	720
530064	BJHF 114 P Warm Start	1x14W T5	100	550
538457	BJHF 124 P Warm Start	1x24W T5	100	600
530065	BJHF 214 P Warm Start	2x14W T5	50	775
530255	BJHFS 218 P Warm Start	2x18W CFL	24	720
530256	BJHFS 226 P Warm Start	2x26W CFL	24	810

Slim, light in weight, regular electronic ballast having THD < 30% power factor > 0.95 suitable for single/twin CFL/FTL/T5 lamp.



#### 'LEADER' Electronic ballast-low harmonics (THD <10%)

530109	BJHF 136/140 LHD	1x36/40W FTL	24	720
530110	BJHF 236/240 LHD	2x36/40W FTL	24	1000
530159	BJHF 418/420 LHD	4x18/20W FTL	24	1530
530292	BJHF 128 LHD	1x28W T5	24	900
530293	BJHF 228 LHD	2x28W T5	24	1170
530933	BJHF 314 LHD	3x14W T5	24	1350
530261	BJHFS 218 CFL LHD	2x18W CFL	24	1000
530991	BJHFS 226 CFL LHD	2x26W CFL	24	1000

'Leader' - high frequency electronic ballast with current harmonic maintained below 10% and EMI/RFI as per international specification with improved power factor close to 0.99 suitable for 36/40W - CFL/FTL luminaires. "Leader" HF Ballasts available in all types & wattage of FTL/CFL.



#### 'INTELLIGENT' Electronic ballast - constant wattage

530113	BJHF 136/140A	1x36/40W FTL	24	1000
530114	BJHF 236/240A	2x36/40W FTL	24	1350
538928	BJHF 414 A	4x14W T5	20	1370
530704	BJHF 254 A	2x54W T5	25	2700

'Intelligent' - Bajaj Constant Wattage Ballast conforming to international and national specifications as safety and performance suitable for 36/40W - CFL/FTL luminaires with power factor closed to unity.

All CFL & FTL- T8/T5 Intelligent Ballasts available on request.



#### Open construction HPMV ballast

▶ 161848	BJOR 80 MV	HPMV 80W	16	1200
▶ 161849	BJOR 125 MV	HPMV 125W	16	1250
162127	BJOR 250 MV	HPMV 250W	8	2250
162248	BJOR 400 MV	HPMV 400W	6	3150

'Intelligent' - Bajaj Constant Wattage Ballast conforming to international and national specifications as safety and performance suitable for 36/40W - CFL/FTL luminaires with power factor closed to unity.



Product Code	Luminaire Type	Lamp Type	Standard Packaging	Unit Price ₹
--------------	----------------	-----------	--------------------	--------------

**Open construction MMH ballast**

161698	BJOS 250W MMH Ballast**	MMH 250W	6	1900
161699	BJOS 400W MMH Ballast**	MMH 400W	6	2950

Open construction electromagnetic ballasts consisting of high quality silicon steel lamination with argon welding, super enamelled copper wire, vacuum impriganated with white resin, terminal block with tapping for 220/240 volts supplied. Suitable for commercial, industrial and area lighting applications.

Note: \*\* MMH ballast to be used for mercury based metal halide lamp only with suitable ignitor (Code: 020124).



**Open construction HPSV/MH ballast**

▶ 169408	BJOS 70 SV/MH	HPSV/MH 70W	16	1200
▶ 162109	BJOS 150 SV/MH	HPSV/MH 150W	8	1800
▶ 169677	BJOS 250 SV/MH	HPSV/MH 250W	6	2750
▶ 169233	BJOS 400 SV/MH	HPSV/MH 400W	6	3990

Open construction electromagnetic ballasts consisting of high quality silicon steel lamination with argon welding, super enamelled copper wire, vacuum impriganated with white resin, terminal block with tapping for 220/240 volts supplied. Suitable for commercial, industrial and area lighting applications.



**Ignitors for HPSV/MH luminaires**

28800	BJIGN HPSV A	HPSV Lamp	As per required	240
20122	BJIGN MH A	MH Lamp	As per required	250
28630	BJIGN HPSV 1	HPSV Lamp	As per required	260
28830	BJIGN HPSV 2	HPSV Lamp	As per required	400
20123	BJIGN SV/MH SI	HPSV Lamp	As per required	550
20124	BJIGN MMH A	MMH Lamp	As per required	350



Product Code	Luminaires Type	Lamp Type	Standard Packaging	MRP ₹
--------------	-----------------	-----------	--------------------	-------

**LIGHT SOURCES**

**.nxt T5 lamps**

148223	.nxt T5 Lamp 28W/86	T5 28W	30	145
148224	.nxt T5 Lamp 14W/86	T5 14W	30	140
148225	.nxt T5 Lamp 28W/84	T5 28W	30	145
148226	.nxt T5 Lamp 14W/84	T5 14W	30	140

Sleek size T5 tubes with advanced triphosphor layer. High color rendering & lumen maintenance. Ideally suitable for Indian weather conditions.



**CDM-T lamps**

148147	BN70CM-T 3K G12	G12/CCT : 3000K	12	1050
--------	-----------------	-----------------	----	------





Product Code	Luminaire Type	Lamp Type	Standard Packaging	MRP ₹
--------------	----------------	-----------	--------------------	-------

## HID LAMPS

### HPMV LAMPS

140480	HPMV 80W BC	-	16	150
140481	HPMV 80W ES	-	16	160
140580	HPMV 125W BC	-	16	160
140581	HPMV 125W ES	-	16	160
140680	HPMV 250W ES	-	12	380
140780	HPMV 400W ES	-	12	560



### HPMV LAMPS

141070	HPSV 70W elliptical WOI	-	12	360
141150	HPSV 150W elliptical	-	9	500
141250	HPSV 250W elliptical	-	9	550
141400	HPSV 400W elliptical	-	6	650
142070	HPSV 70W tubular WOI	-	12	400
142150	HPSV 150W tubular	-	9	520
142250	HPSV 250W tubular	-	9	580
142400	HPSV 400W tubular	-	6	680
142403	HPSV 1000W SV Tubular	-	4	4500



### HPSV SON T PLUS LAMPS

148143	70 W SV T plus	-	12	480
140050	150W SV T plus	-	9	680
140051	250W SV T plus	-	9	825
140052	400W SV T plus	-	6	875



### METAL HALIDE

148033	70W MH DE	-	24	580
148034	150W MH DE	-	24	600
140023	70W MH coated elliptical 27	-	12	790
140028	150W MH coated elliptical 27	-	12	840
140085	150W MH coated elliptical 40	-	12	950
140033	250W MH elliptical coated	-	12	1020
140036	400W MH elliptical coated	-	6	1020



Product Code	Luminaire Type	Lamp Type	Standard Packaging	MRP ₹
<b>METAL HALIDE</b>				
148036	70W MH tubular elliptical 27	-	12	910
148037	150W MH tubular elliptical 27	-	12	960
140104	150W MH tubular elliptical 40	-	12	950
140034	250W MH tubular	-	12	930
140037	400W MH tubular	-	12	930
140136	1000W MH tubular	-	6	3000
140065	250W MMH tubular	-	12	1020
140095	400W MMH tubular	-	12	930
140078	250 W MMH elliptical coated	-	12	1020
140137	400W MMH elliptical coated	-	6	1020



Note: 2KW MH Lamp can be provided on request.  
 All MH Lamp to be used with totally enclosed toughen glass luminaires.



Product Code	Spare Description	unit price ₹	Product Code	Spare Description	unit price ₹
902293	Acrylic cover BJSLA 111	206	918022	Glass for BJEMFS 150 MH DE	326
902292	Acrylic cover BJSLF 211	189	953417	Glass with frame for BGEMF 70 MH	574
902958	Acrylic cover BJSLA 136 CFL	263	918028	Glass With Frame BGEMF 150	795
953272	Acrylic cover BJSLA 1140	389	902077	Glass with frame EMF250 SV	1081
902499	Acrylic with frame BJSLA 140	738	918039	Glass BGEMFS 250/400	412
916246	Acrylic with frame BJSLA 240	835	916152	Glass BJFL 02 70 MH	343
953230	Acrylic BJSLF 85 RF BC	429	902336	Glass BJFL 70SV/MH	549
916155	Acrylic BJSLF 236	681	916223	Glass BJFL 11 150 MH DE	606
953008	Acrylic BTSLF 128/228	389	902853	Trans. for BJAOL 1	4187
916267	Acrylic BTSLF 214 MS	521	902247	Glass BJAOL 1	892
953336	Acrylic cover BTSLF 424 MS (Eco)	1974	916280	Glass BJFL 400W MH T S	704
916206	Acrylic cover BTSLF 424 MS	1447	953388	Glass BJFL 01 250/400	646
902960	Acrylic cover BJMSD 02 70 SV	532	902408	Acrylic BJCPTI 111/118 O	847
916195	Acrylic BJMSD 04 150 SV	641	902218	Acrylic BJCPTI 111/118 CL	847
916194	Acrylic BJMSD 04 250 SV	761	902962	Opal acrylic cover BJCPTI 211	1299
953382	Acrylic cover BJMSDT 03 85 RF CFL	606	902961	Acrylic BJCPTI 211/18/70-125 CL	1299
902062	Acrylic cover BGEST 70 SV DD	498	953419	Diffuser for BRPTI 111/118 Opal	297
902955	Acrylic cover BGEST DD 150 SV	841	953403	Acrylic cover for BTMB 428/454	2437
918030	Acrylic BGEST 250 SV DD	1110	953316	Acrylic with Frame BTMB 414	2437
918006	Acrylic BGEST 02 70 SV	601	953404	Acrylic cover for BTMBN 254/454	2277
902360	Acrylic for BGEST 150 SV	950	953405	Acrylic cover for BTHBX 428/454	1985
902277	Acrylic cover BGEST 250 SV	1110	953406	Acrylic cover for BTMBX 414/424	990
918012	Glass BGEST 02 70 IP 65	601	902910	Glass with gasket for BJBE 19	275
916153	Glass BGEST 150 SV FG SH	870	953303	Glass with gasket BJDB 100	166
918016	Glass BGEST 250 SV SH FG	1024	902263	Glass for BJDBI 70 SV/80 MV	383
918004	Glass BGEST 250 SV IP65 FG	1287	916023	Gasket BJDBI 70SV	343
953246	Glass BGEST 70 SV IP66 FG SHN	555	953231	Glass for BJRLB 02 70	360
953161	Glass BGEST 150 SV FG SHN IP	675	902869	Glass for BJRMB 250	898
953306	Glass BGEST 250 FG SHN	801	953407	Glass with frame for BJPP 70/150 MH DE CA	1390
953267	Glass BGEST 85 RF CFL FG	870	953408	Glass with frame for BJPP 250 MMH CA	1693
953415	Glass for BJMSDT 03 70 SV	412	953268	Glass with frame for BJUCL 400	1996
953102	Glass for BJMSDT 03 150	618	953409	Glass with frame for BJPP 80 LED	1430
902471	Glass for BJMSDT 03 250SV	812	953410	Glass for BJTL 70	646
953416	Glass with gasket for BJEF 15 S	721	953411	Glass for BJTL 150	709
902606	Glass with gasket EF 21 (S)	1316	953412	Glass for BJTL 250	801
916211	Glass for BJENF 14	326	953413	Glass with frame for BJPP 1170/1150	1001
902470	Glass for BJENF 24	847	953357	Glass with gasket for BJHBI 11 TE	1413
902911	Glass for BGENF 22	875	916006	Glass WI Gasket BJVWI 70	303
902989	Glass for BGEMF 70MH DE/SV	206	902969	Glass WI Rubber BJVWI 150	503
902913	Glass for BGEMF 150 MH DE	343	953414	Glass with gasket and wireguard for VW 200	509
902931	Glass for BGEMF 250/400W	412			

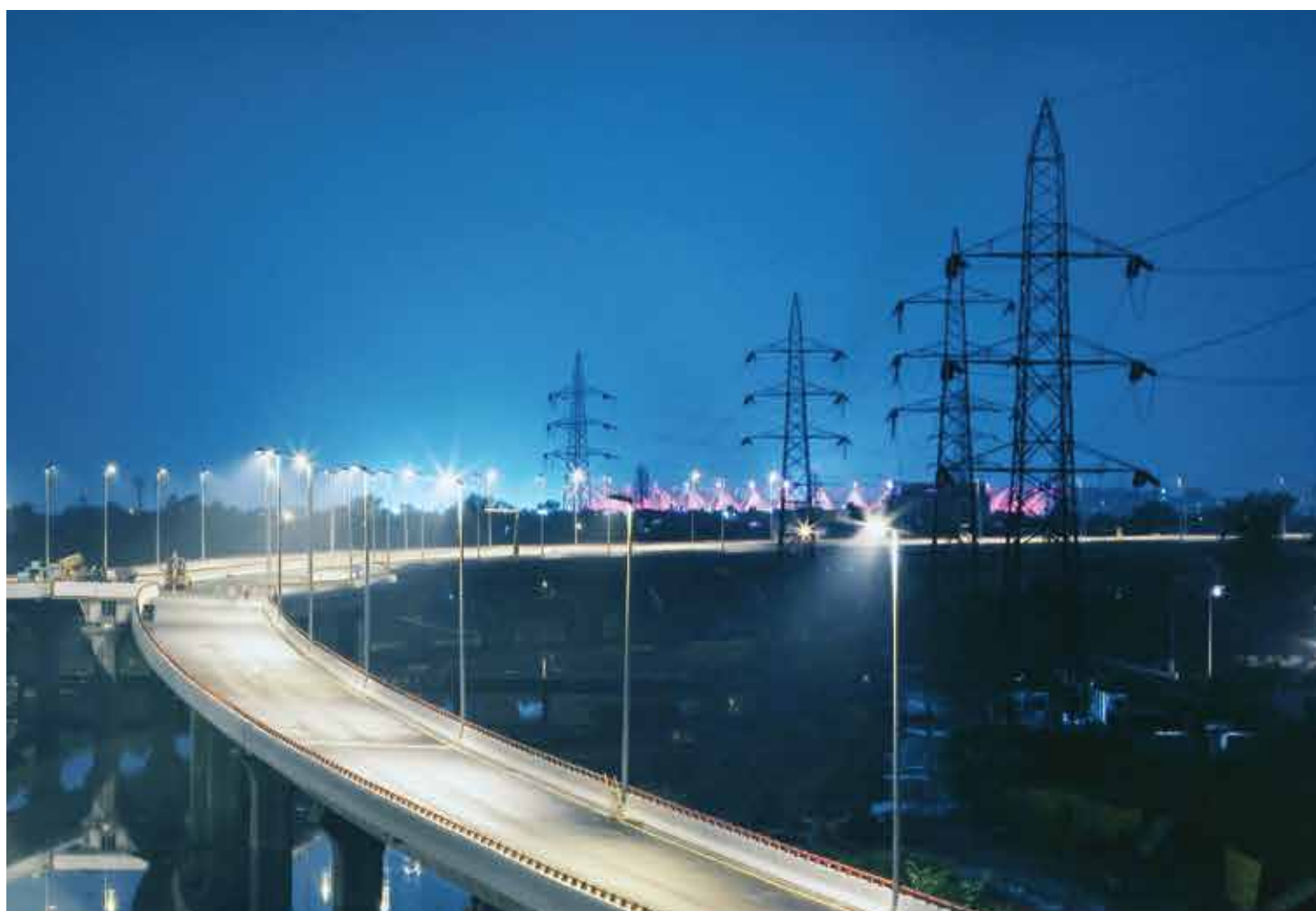
## spare price list

Product Code	Spare Description	unit price ₹	Product Code	Spare Description	unit price ₹
916074	Glass with gasket and wireguard BJWV 300 29	767	953401	Holder plate with holder for BJIR 140	40
953380	SS wireguard BJDWIS 70	772	953402	Holder plate with holder for BJIR 240	29
953004	Lamp holder T5 28W	40	953493	Glass for BJFL 02 250/400	650
902716	Holder for BJDB 100	34	953537	Glass for BJFL 03 250/400	650
902723	Holder ES-70 (SV)	103	953536	Glass for BJFL 04 250/400	710
902859	E 40 SV holder	217	902912	Glass for BJWV 200	230
902491	70 MH DE holder bracket	275	902250	Glass for BJWV 300	260
902718	150 DE holder	275	29511	10 MFD Capacitor	130
902030	New rotor holder	23	29513	20 MFD Capacitor	210
916046	Lamp holder 36W	57	20084	30 MFD Capacitor	320
916177	D type 10/26W CFL lamp holder	46	29516	33 MFD Capacitor	350
916178	Lamp holder 9/11W CFL	40	29517	42 MFD Capacitor	410
953399	Holder plate with holder for BTIR 128	17			
953400	Holder plate with holder for BTIR 228	23			



## General notes for all sections:

- Retail Selling Price (RSP): RSP indicates Retail Selling Price. Product can't be sold above RSP. Taxes and local levies as applicable is inclusive. Prices are inclusive of excise duty as per prevailing rate at the time of supply.
- Unit Price: Is the list price of a product. Dealers may sell at prices lower than the list price. Prices are exclusive of VAT, Octroi and other Govt. levy which shall be charged extra as applicable.
- Prices are in Indian Rupees.
- Prices of all luminaires in this price list are for standard luminaire.
- All the prices are subject to change without any prior notice.
- ▶ Denotes MTA (Made to Available) item readily availability at Central Ware House.
- All product and installation images are indicative.
- Due to continuous efforts in developing products, improvement - Bajaj Electricals Limited reserves the right to make change in the design and data and withdraw the luminaires without any prior notice.
- This price list supersedes all earlier prices and are excluding lamps/tubes.
- Disputes if any will be subjects to Mumbai jurisdiction.
- Abbreviations:  
WW - Warm White (3000K + 300K)                      NW - Neutral White (4000K + 300K)  
WH - White (5700K + 300K)                              CW - Cool White (6000K + 300K)  
COB - Chip on Board





Notes

A series of 26 horizontal grey lines spaced evenly down the page, providing a template for handwritten notes.

## BRANCH OFFICES

### NORTH REGION

---

Chandigarh	Tel.: 0172-5103300
Delhi	Tel.: 011-42554300
Jaipur	Tel.: 0141-2388255/2388240
Lucknow	Tel.: 0522-4938900-30
Noida	Tel.: 0120-4040400/4040419
Haryana	Tel.: 011-42554300

### EAST REGION

---

Bhubaneswar	Tel.: 0674-2390697, 2396980, 2394052
Guwahati	Tel.: 0361-2346497, 2346498, 2346499
Kolkata	Tel.: 033-22622684/86
Patna	Tel.: 0612-2220155, 22231427, 2231978

### CENTRAL REGION

---

Indore	Tel.: 0731-4271439/40
Raipur	Tel.: 0771-2263976, 4060166
Nagpur	Tel.: 0712-2811207

### WEST REGION

---

Ahmedabad	Tel.: 079-27543964/27543967
Mumbai	Tel.: 022-61107800
Pune	Tel.: 020-26302001

### SOUTH REGION

---

Bengaluru	Tel.: 080-42662222
Chennai	Tel.: 044-30662200
Cochin	Tel.: 0484-2391119, 2392039, 2396128
Hyderabad	Tel.: 040-23442932, 23442933
Visakhapatnam	Mob.: 8008709998



LUMINAIRES BUSINESS UNIT, 601, Rustomjee Aspiree, Bhanu Shankar Yagnik Marg,  
Off Eastern Express Highway, Sion (E), Mumbai 400 022. Tel: 022 2406 4400  
E-mail : [luminaires@bajajelectricals.com](mailto:luminaires@bajajelectricals.com) | [www.bajajelectricals.com](http://www.bajajelectricals.com) 